

MOG Antibody (Center)
Affinity Purified Rabbit Polyclonal Antibody (Pab)
Catalog # AP18125c**Specification**

MOG Antibody (Center) - Product Information

Application	WB,E
Primary Accession	Q16653
Other Accession	Q9BGS7 , NP_001008229.1
Reactivity	Human
Predicted	Monkey
Host	Rabbit
Clonality	Polyclonal
Isotype	Rabbit IgG
Calculated MW	28193
Antigen Region	82-109

MOG Antibody (Center) - Additional Information**Gene ID** 4340**Other Names**

Myelin-oligodendrocyte glycoprotein, MOG

Target/Specificity

This MOG antibody is generated from rabbits immunized with a KLH conjugated synthetic peptide between 82-109 amino acids from the Central region of human MOG.

Dilution

WB~~1:1000

Format

Purified polyclonal antibody supplied in PBS with 0.09% (W/V) sodium azide. This antibody is purified through a protein A column, followed by peptide affinity purification.

Storage

Maintain refrigerated at 2-8°C for up to 2 weeks. For long term storage store at -20°C in small aliquots to prevent freeze-thaw cycles.

Precautions

MOG Antibody (Center) is for research use only and not for use in diagnostic or therapeutic procedures.

MOG Antibody (Center) - Protein Information**Name** MOG**Function** Mediates homophilic cell-cell adhesion (By similarity). Minor component of the myelin

sheath. May be involved in completion and/or maintenance of the myelin sheath and in cell-cell communication.

Cellular Location

[Isoform 1]: Cell membrane; Multi- pass membrane protein [Isoform 2]: Cell membrane; Single-pass type I membrane protein [Isoform 4]: Cell membrane; Single- pass type I membrane protein [Isoform 7]: Cell membrane; Single- pass type I membrane protein [Isoform 9]: Cell membrane; Single- pass type I membrane protein

Tissue Location

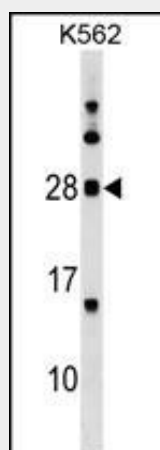
Found exclusively in the CNS, where it is localized on the surface of myelin and oligodendrocyte cytoplasmic membranes

MOG Antibody (Center) - Protocols

Provided below are standard protocols that you may find useful for product applications.

- [Western Blot](#)
- [Blocking Peptides](#)
- [Dot Blot](#)
- [Immunohistochemistry](#)
- [Immunofluorescence](#)
- [Immunoprecipitation](#)
- [Flow Cytometry](#)
- [Cell Culture](#)

MOG Antibody (Center) - Images



MOG Antibody (Center) (Cat. #AP18125c) western blot analysis in K562 cell line lysates (35ug/lane). This demonstrates the MOG antibody detected the MOG protein (arrow).

MOG Antibody (Center) - Background

The product of this gene is a membrane protein expressed on the oligodendrocyte cell surface and the outermost surface of myelin sheaths. Due to this localization, it is a primary target antigen involved in immune-mediated demyelination. This protein may be involved in completion and maintenance of the myelin sheath and in cell-cell communication. Alternatively spliced transcript variants encoding different isoforms have been identified.

MOG Antibody (Center) - References

Bailey, S.D., et al. Diabetes Care 33(10):2250-2253(2010)
Boyle, L.H., et al. J. Neurochem. 102(6):1853-1862(2007)
Allamargot, C., et al. J. Neurochem. 101(2):298-312(2007)
Delarasse, C., et al. J. Neurochem. 98(6):1707-1717(2006)
Ballenthin, P.A., et al. J. Neurosci. Res. 46(2):271-281(1996)