

CCR4 Antibody (C-term)
Affinity Purified Rabbit Polyclonal Antibody (Pab)
Catalog # AP18134b**Specification**

CCR4 Antibody (C-term) - Product Information

| | |
|-------------------|-----------------------------|
| Application | WB,E |
| Primary Accession | P51679 |
| Other Accession | NP_005499.1 |
| Reactivity | Human |
| Host | Rabbit |
| Clonality | Polyclonal |
| Isotype | Rabbit IgG |
| Antigen Region | 262-290 |

CCR4 Antibody (C-term) - Additional Information**Gene ID** 1233**Other Names**

C-C chemokine receptor type 4, C-C CKR-4, CC-CKR-4, CCR-4, CCR4, K5-5, CD194, CCR4, CMKBR4

Target/Specificity

This CCR4 antibody is generated from rabbits immunized with a KLH conjugated synthetic peptide between 262-290 amino acids from the C-terminal region of human CCR4.

Dilution

WB~~1:1000

Format

Purified polyclonal antibody supplied in PBS with 0.09% (W/V) sodium azide. This antibody is purified through a protein A column, followed by peptide affinity purification.

Storage

Maintain refrigerated at 2-8°C for up to 2 weeks. For long term storage store at -20°C in small aliquots to prevent freeze-thaw cycles.

Precautions

CCR4 Antibody (C-term) is for research use only and not for use in diagnostic or therapeutic procedures.

CCR4 Antibody (C-term) - Protein Information**Name** CCR4**Synonyms** CMKBR4**Function** High affinity receptor for the C-C type chemokines CCL17/TARC, CCL22/MDC and CKLF

isoform 1/CKLF1. The activity of this receptor is mediated by G(i) proteins which activate a phosphatidylinositol-calcium second messenger system. Can function as a chemoattractant homing receptor on circulating memory lymphocytes and as a coreceptor for some primary HIV-2 isolates. In the CNS, could mediate hippocampal-neuron survival.

Cellular Location

Cell membrane; Multi-pass membrane protein.

Tissue Location

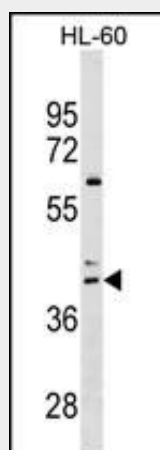
Predominantly expressed in the thymus, in peripheral blood leukocytes, including T-cells, mostly CD4+ cells, and basophils, and in platelets; at lower levels, in the spleen and in monocytes (PubMed:10754297, PubMed:9169480). Detected also in macrophages, IL-2-activated natural killer cells and skin-homing memory T-cells, mostly the ones expressing the cutaneous lymphocyte antigen (CLA). Expressed in brain microvascular and coronary artery endothelial cells (PubMed:10754297).

CCR4 Antibody (C-term) - Protocols

Provided below are standard protocols that you may find useful for product applications.

- [Western Blot](#)
- [Blocking Peptides](#)
- [Dot Blot](#)
- [Immunohistochemistry](#)
- [Immunofluorescence](#)
- [Immunoprecipitation](#)
- [Flow Cytometry](#)
- [Cell Culture](#)

CCR4 Antibody (C-term) - Images



CCR4 Antibody (C-term) (Cat. #AP18134b) western blot analysis in HL-60 cell line lysates (35ug/lane). This demonstrates the CCR4 antibody detected the CCR4 protein (arrow).

CCR4 Antibody (C-term) - Background

The protein encoded by this gene belongs to the G-protein-coupled receptor family. It is a receptor for the CC chemokine - MIP-1, RANTES, TARC and MCP-1. Chemokines are a group of small polypeptide, structurally related molecules that regulate

cell trafficking of various types of leukocytes. The chemokines also play fundamental roles in the development, homeostasis, and function of the immune system, and they have effects on cells of the central nervous system as well as on endothelial cells involved in angiogenesis or angiostasis.

CCR4 Antibody (C-term) - References

Bailey, S.D., et al. Diabetes Care 33(10):2250-2253(2010)
Han, S., et al. Hum. Immunol. 71(7):727-730(2010)
Rajaraman, P., et al. Cancer Epidemiol. Biomarkers Prev. 19(5):1356-1361(2010)
Klapa, S., et al. Clin. Exp. Rheumatol. 28 (1 SUPPL 57), 72-80 (2010) :
Maneechotesuwan, K., et al. J Med Assoc Thai 93 SUPPL 1, S62-S70 (2010) :