

**ALG11 Antibody (C-term)**  
**Affinity Purified Rabbit Polyclonal Antibody (Pab)**  
**Catalog # AP18142b****Specification**

---

**ALG11 Antibody (C-term) - Product Information**

Application	WB,E
Primary Accession	<a href="#">Q2TAA5</a>
Other Accession	<a href="#">NP_001004127.2</a>
Reactivity	Human, Mouse
Host	Rabbit
Clonality	Polyclonal
Isotype	Rabbit IgG
Calculated MW	55651
Antigen Region	442-468

**ALG11 Antibody (C-term) - Additional Information****Gene ID** 440138**Other Names**

GDP-Man:Man(3)GlcNAc(2)-PP-Dol alpha-1, 2-mannosyltransferase, Asparagine-linked glycosylation protein 11 homolog, Glycolipid 2-alpha-mannosyltransferase, ALG11, GT8

**Target/Specificity**

This ALG11 antibody is generated from rabbits immunized with a KLH conjugated synthetic peptide between 442-468 amino acids from the C-terminal region of human ALG11.

**Dilution**

WB~~1:1000

**Format**

Purified polyclonal antibody supplied in PBS with 0.09% (W/V) sodium azide. This antibody is purified through a protein A column, followed by peptide affinity purification.

**Storage**

Maintain refrigerated at 2-8°C for up to 2 weeks. For long term storage store at -20°C in small aliquots to prevent freeze-thaw cycles.

**Precautions**

ALG11 Antibody (C-term) is for research use only and not for use in diagnostic or therapeutic procedures.

**ALG11 Antibody (C-term) - Protein Information****Name** ALG11**Synonyms** GT8

**Function** Mannosyltransferase involved in the last steps of the synthesis of Man5GlcNAc(2)-PP-dolichol core oligosaccharide on the cytoplasmic face of the endoplasmic reticulum. Catalyzes the addition of the 4th and 5th mannose residues to the dolichol-linked oligosaccharide chain.

**Cellular Location**

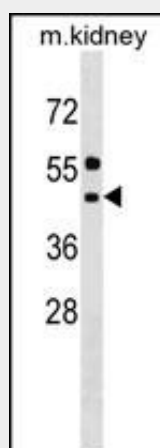
Endoplasmic reticulum. Endoplasmic reticulum membrane; Multi-pass membrane protein

**ALG11 Antibody (C-term) - Protocols**

Provided below are standard protocols that you may find useful for product applications.

- [Western Blot](#)
- [Blocking Peptides](#)
- [Dot Blot](#)
- [Immunohistochemistry](#)
- [Immunofluorescence](#)
- [Immunoprecipitation](#)
- [Flow Cytometry](#)
- [Cell Culture](#)

**ALG11 Antibody (C-term) - Images**



ALG11 Antibody (C-term) (Cat. #AP18142b) western blot analysis in mouse kidney tissue lysates (35ug/lane). This demonstrates the ALG11 antibody detected the ALG11 protein (arrow).

**ALG11 Antibody (C-term) - Background**

This gene encodes a GDP-Man:Man3GlcNAc2-PP-dolichol-alpha1,2-mannosyltransferase which is localized to the cytosolic side of the endoplasmic reticulum (ER) and catalyzes the transfer of the fourth and fifth mannose residue from GDP-mannose (GDP-Man) to Man3GlcNAc2-PP-dolichol and Man4GlcNAc2-PP-dolichol resulting in the production of Man5GlcNAc2-PP-dolichol. Mutations in this gene are associated with congenital disorder of glycosylation type 1p (CDG1P). This gene overlaps but is distinct from the UTP14, U3 small nucleolar ribonucleoprotein, homolog C (yeast) gene. A pseudogene of the GDP-Man:Man3GlcNAc2-PP-dolichol-alpha1,2-mannosyltransferase has been identified on chromosome 19.

### **ALG11 Antibody (C-term) - References**

Rind, N., et al. Hum. Mol. Genet. 19(8):1413-1424(2010)  
Rohozinski, J., et al. Biol. Reprod. 74(4):644-651(2006)