

**MUDEN Antibody (C-term)**  
**Affinity Purified Rabbit Polyclonal Antibody (Pab)**  
**Catalog # AP18171b**

**Specification**

---

**MUDEN Antibody (C-term) - Product Information**

Application	WB,E
Primary Accession	<a href="#">O9H0R1</a>
Other Accession	<a href="#">O4R6Q7</a> , <a href="#">NP_060699.3</a>
Reactivity	Human
Predicted	Monkey
Host	Rabbit
Clonality	Polyclonal
Isotype	Rabbit IgG
Calculated MW	54767
Antigen Region	356-384

**MUDEN Antibody (C-term) - Additional Information**

**Gene ID** 55745

**Other Names**

AP-5 complex subunit mu-1, Adaptor-related protein complex 5 subunit mu-1, Mu5, Mu-2-related death-inducing protein, MuD, Putative HIV-1 infection-related protein, AP5M1, C14orf108, MUDENG

**Target/Specificity**

This MUDEN antibody is generated from rabbits immunized with a KLH conjugated synthetic peptide between 356-384 amino acids from the C-terminal region of human MUDEN.

**Dilution**

WB~~1:1000

**Format**

Purified polyclonal antibody supplied in PBS with 0.09% (W/V) sodium azide. This antibody is purified through a protein A column, followed by peptide affinity purification.

**Storage**

Maintain refrigerated at 2-8°C for up to 2 weeks. For long term storage store at -20°C in small aliquots to prevent freeze-thaw cycles.

**Precautions**

MUDEN Antibody (C-term) is for research use only and not for use in diagnostic or therapeutic procedures.

**MUDEN Antibody (C-term) - Protein Information**

**Name** AP5M1

**Synonyms** C14orf108, MUDENG

**Function** As part of AP-5, a probable fifth adaptor protein complex it may be involved in endosomal transport. According to PubMed:[18395520](#), it may play a role in cell death.

**Cellular Location**

Cytoplasm, cytosol. Late endosome membrane; Peripheral membrane protein; Cytoplasmic side. Lysosome membrane; Peripheral membrane protein; Cytoplasmic side. Note=May cycle on and off membranes

**Tissue Location**

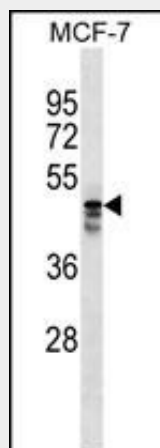
Expressed in various tumor cell lines including Jurkat, Hep-G2 and HeLa.

**MUDEN Antibody (C-term) - Protocols**

Provided below are standard protocols that you may find useful for product applications.

- [Western Blot](#)
- [Blocking Peptides](#)
- [Dot Blot](#)
- [Immunohistochemistry](#)
- [Immunofluorescence](#)
- [Immunoprecipitation](#)
- [Flow Cytometry](#)
- [Cell Culture](#)

**MUDEN Antibody (C-term) - Images**



MUDEN Antibody (C-term) (Cat. #AP18171b) western blot analysis in MCF-7 cell line lysates (35ug/lane). This demonstrates the MUDEN antibody detected the MUDEN protein (arrow).

**MUDEN Antibody (C-term) - Background**

MUDENG may play an important role in cell death.

**MUDEN Antibody (C-term) - References**

Lee, M.R., et al. Biochem. Biophys. Res. Commun. 370(3):504-508(2008)