

RGS19 Antibody (N-term)
Purified Rabbit Polyclonal Antibody (Pab)
Catalog # AP1820a**Specification**

RGS19 Antibody (N-term) - Product Information

Application	WB, IHC-P,E
Primary Accession	P49795
Reactivity	Human
Host	Rabbit
Clonality	Polyclonal
Isotype	Rabbit IgG
Antigen Region	1-30

RGS19 Antibody (N-term) - Additional Information**Gene ID** 10287**Other Names**

Regulator of G-protein signaling 19, RGS19, G-alpha-interacting protein, GAIP, RGS19, GAIP, GNAI3IP

Target/Specificity

This RGS19 antibody is generated from rabbits immunized with a KLH conjugated synthetic peptide between 1~30 amino acids from the N-term of human RGS19.

DilutionWB~~1:2000
IHC-P~~1:50~100**Format**

Purified polyclonal antibody supplied in PBS with 0.09% (W/V) sodium azide. This antibody is prepared by Saturated Ammonium Sulfate (SAS) precipitation followed by dialysis against PBS.

Storage

Maintain refrigerated at 2-8°C for up to 2 weeks. For long term storage store at -20°C in small aliquots to prevent freeze-thaw cycles.

Precautions

RGS19 Antibody (N-term) is for research use only and not for use in diagnostic or therapeutic procedures.

RGS19 Antibody (N-term) - Protein Information**Name** RGS19**Synonyms** GAIP, GNAI3IP

Function Inhibits signal transduction by increasing the GTPase activity of G protein alpha subunits thereby driving them into their inactive GDP-bound form. Binds to G-alpha subfamily 1 members, with the order G(i)a3 > G(i)a1 > G(o)a >> G(z)a/G(i)a2. Activity on G(z)-alpha is inhibited by phosphorylation and palmitoylation of the G-protein.

Cellular Location

Membrane; Lipid-anchor.

Tissue Location

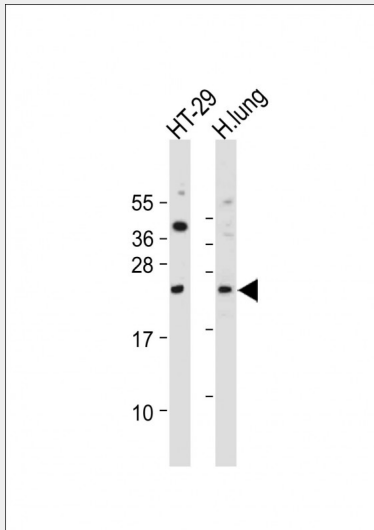
Highest expression in lung. Placenta, liver and heart also express high levels of GAIP

RGS19 Antibody (N-term) - Protocols

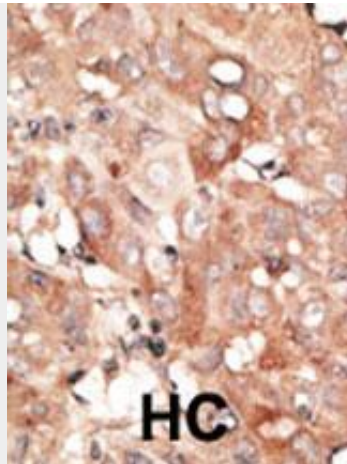
Provided below are standard protocols that you may find useful for product applications.

- [Western Blot](#)
- [Blocking Peptides](#)
- [Dot Blot](#)
- [Immunohistochemistry](#)
- [Immunofluorescence](#)
- [Immunoprecipitation](#)
- [Flow Cytometry](#)
- [Cell Culture](#)

RGS19 Antibody (N-term) - Images



All lanes : Anti-RGS19-H5 at 1:2000 dilution Lane 1: HT-29 whole cell lysate Lane 2: Human lung tissue lysate Lysates/proteins at 20 µg per lane. Secondary Goat Anti-Rabbit IgG, (H+L), Peroxidase conjugated at 1/10000 dilution. Predicted band size : 25 kDa Blocking/Dilution buffer: 5% NFDM/TBST.



Formalin-fixed and paraffin-embedded human cancer tissue reacted with the primary antibody, which was peroxidase-conjugated to the secondary antibody, followed by DAB staining. This data demonstrates the use of this antibody for immunohistochemistry; clinical relevance has not been evaluated. BC = breast carcinoma; HC = hepatocarcinoma.

RGS19 Antibody (N-term) - Background

Macroautophagy is the major inducible pathway for the general turnover of cytoplasmic constituents in eukaryotic cells, it is also responsible for the degradation of active cytoplasmic enzymes and organelles during nutrient starvation. Macroautophagy involves the formation of double-membrane bound autophagosomes which enclose the cytoplasmic constituent targeted for degradation in a membrane bound structure, which then fuse with the lysosome (or vacuole) releasing a single-membrane bound autophagic bodies which are then degraded within the lysosome (or vacuole).

RGS19 enhances the intrinsic GTPase-activating protein activity of the Galphai3 protein, which stimulates autophagy by favoring the GDP-bound form of Galphai3.

RGS19 Antibody (N-term) - References

- Baehrecke EH. Nat Rev Mol Cell Biol. 6(6):505-10. (2005)
Lum JJ, et al. Nat Rev Mol Cell Biol. 6(6):439-48. (2005)
Greenberg JT. Dev Cell. 8(6):799-801. (2005)
Levine B. Cell. 120(2):159-62. (2005)
Shintani T and Klionsky DJ. Science. 306(5698):990-5. (2004)
de Vries L., et al. PNAS 93:15203-15208(1996)
de Alba E., et al. J. Mol. Biol. 291:927-939(1999)
Wang J., et al. J. Biol. Chem. 273:26014-26025(1998)
Ogier-Denis E., et al. J. Biol. Chem. 275:39090-39095(2000)

RGS19 Antibody (N-term) - Citations

- [Gxi1 and Gxi3 regulate macrophage polarization by forming a complex containing CD14 and Gab1.](#)
- [Activation of autophagy in mesenchymal stem cells provides tumor stromal support.](#)