

**PIGS Antibody (C-term)**  
**Affinity Purified Rabbit Polyclonal Antibody (Pab)**  
**Catalog # AP18217b**

**Specification**

---

**PIGS Antibody (C-term) - Product Information**

|                   |                             |
|-------------------|-----------------------------|
| Application       | WB,E                        |
| Primary Accession | <a href="#">O96S52</a>      |
| Other Accession   | <a href="#">NP_149975.1</a> |
| Reactivity        | Human                       |
| Host              | Rabbit                      |
| Clonality         | Polyclonal                  |
| Isotype           | Rabbit IgG                  |
| Calculated MW     | 61656                       |
| Antigen Region    | 527-555                     |

**PIGS Antibody (C-term) - Additional Information**

**Gene ID** 94005

**Other Names**

GPI transamidase component PIG-S, Phosphatidylinositol-glycan biosynthesis class S protein, PIGS

**Target/Specificity**

This PIGS antibody is generated from rabbits immunized with a KLH conjugated synthetic peptide between 527-555 amino acids from the C-terminal region of human PIGS.

**Dilution**

WB~~1:1000

**Format**

Purified polyclonal antibody supplied in PBS with 0.09% (W/V) sodium azide. This antibody is purified through a protein A column, followed by peptide affinity purification.

**Storage**

Maintain refrigerated at 2-8°C for up to 2 weeks. For long term storage store at -20°C in small aliquots to prevent freeze-thaw cycles.

**Precautions**

PIGS Antibody (C-term) is for research use only and not for use in diagnostic or therapeutic procedures.

**PIGS Antibody (C-term) - Protein Information**

**Name** PIGS

**Function** Component of the GPI transamidase complex. Essential for transfer of GPI to proteins, particularly for formation of carbonyl intermediates.

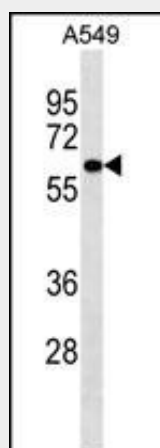
**Cellular Location**

Endoplasmic reticulum membrane; Multi-pass membrane protein

**PIGS Antibody (C-term) - Protocols**

Provided below are standard protocols that you may find useful for product applications.

- [Western Blot](#)
- [Blocking Peptides](#)
- [Dot Blot](#)
- [Immunohistochemistry](#)
- [Immunofluorescence](#)
- [Immunoprecipitation](#)
- [Flow Cytometry](#)
- [Cell Culture](#)

**PIGS Antibody (C-term) - Images**

PIGS Antibody (C-term) (Cat. #AP18217b) western blot analysis in A549 cell line lysates (35ug/lane). This demonstrates the PIGS antibody detected the PIGS protein (arrow).

**PIGS Antibody (C-term) - Background**

This gene encodes a protein that is involved in GPI-anchor biosynthesis. The glycosylphosphatidylinositol (GPI) anchor is a glycolipid found on many blood cells and serves to anchor proteins to the cell surface. This gene encodes an essential component of the multisubunit enzyme, GPI transamidase. GPI transamidase mediates GPI anchoring in the endoplasmic reticulum, by catalyzing the transfer of fully assembled GPI units to proteins. [provided by RefSeq].

**PIGS Antibody (C-term) - References**

Vainauskas, S., et al. J. Biol. Chem. 280(16):16402-16409(2005)  
Clark, H.F., et al. Genome Res. 13(10):2265-2270(2003)  
Hong, Y., et al. Mol. Biol. Cell 14(5):1780-1789(2003)  
Ohishi, K., et al. J. Biol. Chem. 278(16):13959-13967(2003)  
Vainauskas, S., et al. J. Biol. Chem. 277(34):30535-30542(2002)