

**RHPN1 Antibody (C-term)**  
**Affinity Purified Rabbit Polyclonal Antibody (Pab)**  
**Catalog # AP18237b**

**Specification**

---

**RHPN1 Antibody (C-term) - Product Information**

Application	WB,E
Primary Accession	<a href="#">Q8TCX5</a>
Other Accession	<a href="#">NP_443156.2</a>
Reactivity	Human, Mouse
Host	Rabbit
Clonality	Polyclonal
Isotype	Rabbit IgG
Calculated MW	73590
Antigen Region	478-505

**RHPN1 Antibody (C-term) - Additional Information**

**Gene ID** 114822

**Other Names**

Rhopilin-1, GTP-Rho-binding protein 1, RHPN1, KIAA1929

**Target/Specificity**

This RHPN1 antibody is generated from rabbits immunized with a KLH conjugated synthetic peptide between 478-505 amino acids from the C-terminal region of human RHPN1.

**Dilution**

WB~~1:1000

**Format**

Purified polyclonal antibody supplied in PBS with 0.09% (W/V) sodium azide. This antibody is purified through a protein A column, followed by peptide affinity purification.

**Storage**

Maintain refrigerated at 2-8°C for up to 2 weeks. For long term storage store at -20°C in small aliquots to prevent freeze-thaw cycles.

**Precautions**

RHPN1 Antibody (C-term) is for research use only and not for use in diagnostic or therapeutic procedures.

**RHPN1 Antibody (C-term) - Protein Information**

**Name** RHPN1 ([HGNC:19973](#))

**Synonyms** KIAA1929

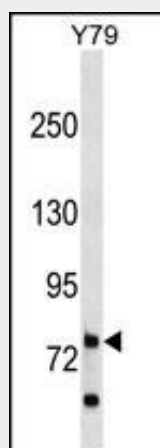
**Function** Has no enzymatic activity. May serve as a target for Rho, and interact with some cytoskeletal component upon Rho binding or relay a Rho signal to other molecules.

### RHPN1 Antibody (C-term) - Protocols

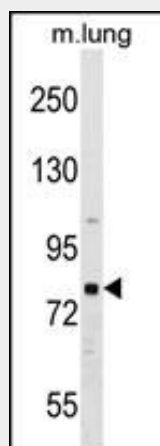
Provided below are standard protocols that you may find useful for product applications.

- [Western Blot](#)
- [Blocking Peptides](#)
- [Dot Blot](#)
- [Immunohistochemistry](#)
- [Immunofluorescence](#)
- [Immunoprecipitation](#)
- [Flow Cytometry](#)
- [Cell Culture](#)

### RHPN1 Antibody (C-term) - Images



RHPN1 Antibody (C-term) (Cat. #AP18237b) western blot analysis in Y79 cell line lysates (35ug/lane). This demonstrates the RHPN1 antibody detected the RHPN1 protein (arrow).



RHPN1 Antibody (C-term) (Cat. #AP18237b) western blot analysis in mouse lung tissue lysates (35ug/lane). This demonstrates the RHPN1 antibody detected the RHPN1 protein (arrow).

### RHPN1 Antibody (C-term) - Background

RHPN1 has no enzymatic activity. May serve as a target for Rho, and interact with some cytoskeletal component upon Rho binding or relay a Rho signal to other molecules (By similarity).

#### **RHPN1 Antibody (C-term) - References**

Jaffe, A.B., et al. Mol. Cell. Biol. 24(4):1736-1746(2004)  
Peck, J.W., et al. J. Biol. Chem. 277(46):43924-43932(2002)  
Fujita, A., et al. J. Cell. Sci. 113 (PT 1), 103-112 (2000) :