

**OTP Antibody (Center)**  
**Affinity Purified Rabbit Polyclonal Antibody (Pab)**  
**Catalog # AP18242c**

**Specification**

---

**OTP Antibody (Center) - Product Information**

Application	WB,E
Primary Accession	<a href="#">Q5XKR4</a>
Other Accession	<a href="#">O09113</a> , <a href="#">Q6DGH9</a> , <a href="#">NP_115485.1</a>
Reactivity	Human, Mouse
Predicted	Zebrafish
Host	Rabbit
Clonality	Polyclonal
Isotype	Rabbit IgG
Calculated MW	34159
Antigen Region	88-115

**OTP Antibody (Center) - Additional Information**

**Gene ID** 23440

**Other Names**

Homeobox protein orthopedia, OTP

**Target/Specificity**

This OTP antibody is generated from rabbits immunized with a KLH conjugated synthetic peptide between 88-115 amino acids from the Central region of human OTP.

**Dilution**

WB~~1:1000

**Format**

Purified polyclonal antibody supplied in PBS with 0.09% (W/V) sodium azide. This antibody is purified through a protein A column, followed by peptide affinity purification.

**Storage**

Maintain refrigerated at 2-8°C for up to 2 weeks. For long term storage store at -20°C in small aliquots to prevent freeze-thaw cycles.

**Precautions**

OTP Antibody (Center) is for research use only and not for use in diagnostic or therapeutic procedures.

**OTP Antibody (Center) - Protein Information**

**Name** OTP

**Function** Probably involved in the differentiation of hypothalamic neuroendocrine cells.

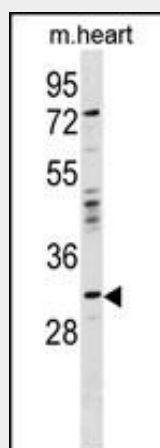
**Cellular Location**

Nucleus {ECO:0000255|PROSITE-ProRule:PRU00108, ECO:0000255|PROSITE-ProRule:PRU00138, ECO:0000269|PubMed:10458915}

**OTP Antibody (Center) - Protocols**

Provided below are standard protocols that you may find useful for product applications.

- [Western Blot](#)
- [Blocking Peptides](#)
- [Dot Blot](#)
- [Immunohistochemistry](#)
- [Immunofluorescence](#)
- [Immunoprecipitation](#)
- [Flow Cytometry](#)
- [Cell Culture](#)

**OTP Antibody (Center) - Images**

OTP Antibody (Center) (Cat. #AP18242c) western blot analysis in mouse heart tissue lysates (35ug/lane). This demonstrates the OTP antibody detected the OTP protein (arrow).

**OTP Antibody (Center) - Background**

This gene encodes a member of the homeodomain (HD) family. HD family proteins are helix-turn-helix transcription factors that play key roles in the specification of cell fates. This protein may function during brain development.

**OTP Antibody (Center) - References**

Lin, X., et al. Genomics 60(1):96-104(1999)