

ZNF568 Antibody (Center)
Affinity Purified Rabbit Polyclonal Antibody (Pab)
Catalog # AP18245c**Specification**

ZNF568 Antibody (Center) - Product Information

| | |
|-------------------|-----------------------------|
| Application | WB,E |
| Primary Accession | O3ZCX4 |
| Other Accession | NP_940941.2 |
| Reactivity | Human |
| Host | Rabbit |
| Clonality | Polyclonal |
| Isotype | Rabbit IgG |
| Calculated MW | 74369 |
| Antigen Region | 184-211 |

ZNF568 Antibody (Center) - Additional Information**Gene ID** 374900**Other Names**

Zinc finger protein 568, ZNF568

Target/Specificity

This ZNF568 antibody is generated from rabbits immunized with a KLH conjugated synthetic peptide between 184-211 amino acids from the Central region of human ZNF568.

Dilution

WB~~1:1000

Format

Purified polyclonal antibody supplied in PBS with 0.09% (W/V) sodium azide. This antibody is purified through a protein A column, followed by peptide affinity purification.

Storage

Maintain refrigerated at 2-8°C for up to 2 weeks. For long term storage store at -20°C in small aliquots to prevent freeze-thaw cycles.

Precautions

ZNF568 Antibody (Center) is for research use only and not for use in diagnostic or therapeutic procedures.

ZNF568 Antibody (Center) - Protein Information**Name** ZNF568

Function Has transcriptional repression activity, partially through the recruitment of the corepressor TRIM28 but has also repression activity independently of this interaction. Essential

during embryonic development, where it acts as a direct repressor of a placental- specific transcript of IGF2 in early development and regulates convergent extension movements required for axis elongation and tissue morphogenesis in all germ layers. Also important for normal morphogenesis of extraembryonic tissues including the yolk sac, extraembryonic mesoderm and placenta. May enhance proliferation or maintenance of neural stem cells.

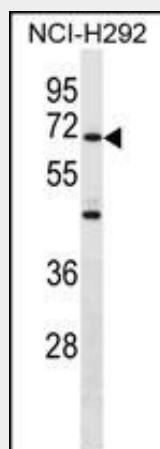
Cellular Location

Nucleus {ECO:0000250|UniProtKB:E9PY11}.

ZNF568 Antibody (Center) - Protocols

Provided below are standard protocols that you may find useful for product applications.

- [Western Blot](#)
- [Blocking Peptides](#)
- [Dot Blot](#)
- [Immunohistochemistry](#)
- [Immunofluorescence](#)
- [Immunoprecipitation](#)
- [Flow Cytometry](#)
- [Cell Culture](#)

ZNF568 Antibody (Center) - Images

ZNF568 Antibody (Center) (Cat. #AP18245c) western blot analysis in NCI-H292 cell line lysates (35ug/lane). This demonstrates the ZNF568 antibody detected the ZNF568 protein (arrow).

ZNF568 Antibody (Center) - Background

ZNF568 may be involved in transcriptional regulation (By similarity).

ZNF568 Antibody (Center) - References

Kimura, K., et al. Genome Res. 16(1):55-65(2006)