

MBD3L1 Antibody (C-term)
Affinity Purified Rabbit Polyclonal Antibody (Pab)
Catalog # AP18250b**Specification**

MBD3L1 Antibody (C-term) - Product Information

Application	WB,E
Primary Accession	Q8WWY6
Other Accession	NP_660209.2
Reactivity	Human
Host	Rabbit
Clonality	Polyclonal
Isotype	Rabbit IgG
Calculated MW	21616
Antigen Region	168-194

MBD3L1 Antibody (C-term) - Additional Information**Gene ID** 85509**Other Names**

Methyl-CpG-binding domain protein 3-like 1, MBD3-like protein 1, MBD3L1, MBD3L

Target/Specificity

This MBD3L1 antibody is generated from rabbits immunized with a KLH conjugated synthetic peptide between 168-194 amino acids from the C-terminal region of human MBD3L1.

Dilution

WB~~1:1000

Format

Purified polyclonal antibody supplied in PBS with 0.09% (W/V) sodium azide. This antibody is purified through a protein A column, followed by peptide affinity purification.

Storage

Maintain refrigerated at 2-8°C for up to 2 weeks. For long term storage store at -20°C in small aliquots to prevent freeze-thaw cycles.

Precautions

MBD3L1 Antibody (C-term) is for research use only and not for use in diagnostic or therapeutic procedures.

MBD3L1 Antibody (C-term) - Protein Information**Name** MBD3L1**Synonyms** MBD3L

Function Transcriptional repressor.

Cellular Location

Nucleus. Note=Nuclear, in large foci

Tissue Location

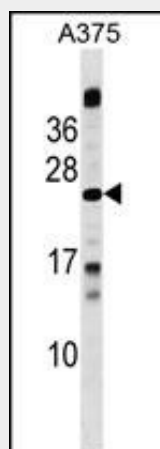
Highly expressed in testis. Detected at low levels in pancreas. Not detected in the other tissues tested

MBD3L1 Antibody (C-term) - Protocols

Provided below are standard protocols that you may find useful for product applications.

- [Western Blot](#)
- [Blocking Peptides](#)
- [Dot Blot](#)
- [Immunohistochemistry](#)
- [Immunofluorescence](#)
- [Immunoprecipitation](#)
- [Flow Cytometry](#)
- [Cell Culture](#)

MBD3L1 Antibody (C-term) - Images



MBD3L1 Antibody (C-term) (Cat. #AP18250b) western blot analysis in A375 cell line lysates (35ug/lane). This demonstrates the MBD3L1 antibody detected the MBD3L1 protein (arrow).

MBD3L1 Antibody (C-term) - Background

This gene encodes a protein that is related to methyl-CpG-binding proteins but lacks the methyl-CpG binding domain. The protein is localized to discrete areas in the nucleus, and expression appears to be restricted to round spermatids, suggesting that the protein plays a role in the postmeiotic stages of male germ cell development.

MBD3L1 Antibody (C-term) - References

Jiang, C.L., et al. J. Biol. Chem. 279(50):52456-52464(2004)
Yao, Y.L., et al. J. Biol. Chem. 278(43):42560-42568(2003)

Jiang, C.L., et al. Genomics 80(6):621-629(2002)