

SGK071 Antibody (C-term)
Affinity Purified Rabbit Polyclonal Antibody (Pab)
Catalog # AP18253B

Specification

SGK071 Antibody (C-term) - Product Information

Application	WB,E
Primary Accession	Q8NE28
Other Accession	NP_714921.3
Reactivity	Human
Host	Rabbit
Clonality	Polyclonal
Isotype	Rabbit IgG
Calculated MW	75677
Antigen Region	583-609

SGK071 Antibody (C-term) - Additional Information

Gene ID 169436

Other Names

Serine/threonine kinase-like domain-containing protein STKLD1, Serine/threonine kinase-like domain-containing protein 1, Sugen kinase 071, STKLD1, C9orf96, SGK071

Target/Specificity

This SGK071 antibody is generated from rabbits immunized with a KLH conjugated synthetic peptide between 583-609 amino acids from the C-terminal region of human SGK071.

Dilution

WB~~1:1000

Format

Purified polyclonal antibody supplied in PBS with 0.09% (W/V) sodium azide. This antibody is purified through a protein A column, followed by peptide affinity purification.

Storage

Maintain refrigerated at 2-8°C for up to 2 weeks. For long term storage store at -20°C in small aliquots to prevent freeze-thaw cycles.

Precautions

SGK071 Antibody (C-term) is for research use only and not for use in diagnostic or therapeutic procedures.

SGK071 Antibody (C-term) - Protein Information

Name STKLD1

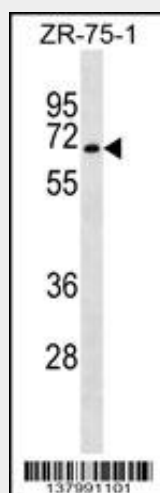
Synonyms C9orf96, SGK071

SGK071 Antibody (C-term) - Protocols

Provided below are standard protocols that you may find useful for product applications.

- [Western Blot](#)
- [Blocking Peptides](#)
- [Dot Blot](#)
- [Immunohistochemistry](#)
- [Immunofluorescence](#)
- [Immunoprecipitation](#)
- [Flow Cytometry](#)
- [Cell Culture](#)

SGK071 Antibody (C-term) - Images



SGK071 Antibody (C-term) (Cat. #AP18253b) western blot analysis in ZR-75-1 cell line lysates (35ug/lane). This demonstrates the SGK071 antibody detected the SGK071 protein (arrow).

SGK071 Antibody (C-term) - Background

C9orf96 belongs to the serine/threonine protein kinase family. However, the protein kinase domain is predicted to be catalytically inactive. The specific function of this protein is unknown.

SGK071 Antibody (C-term) - References

Humphray, S.J., et al. Nature 429(6990):369-374(2004)
Manning, G., et al. Science 298(5600):1912-1934(2002)