

**RPAP3 Antibody (Center)**  
**Affinity Purified Rabbit Polyclonal Antibody (Pab)**  
**Catalog # AP18284c**

**Specification**

---

**RPAP3 Antibody (Center) - Product Information**

Application	WB,E
Primary Accession	<a href="#">O9H6T3</a>
Other Accession	<a href="#">NP_001139547.1</a>
Reactivity	Human
Host	Rabbit
Clonality	Polyclonal
Isotype	Rabbit IgG
Calculated MW	75719
Antigen Region	311-338

**RPAP3 Antibody (Center) - Additional Information**

**Gene ID** 79657

**Other Names**

RNA polymerase II-associated protein 3, RPAP3

**Target/Specificity**

This RPAP3 antibody is generated from rabbits immunized with a KLH conjugated synthetic peptide between 311-338 amino acids from the Central region of human RPAP3.

**Dilution**

WB~~1:1000

**Format**

Purified polyclonal antibody supplied in PBS with 0.09% (W/V) sodium azide. This antibody is purified through a protein A column, followed by peptide affinity purification.

**Storage**

Maintain refrigerated at 2-8°C for up to 2 weeks. For long term storage store at -20°C in small aliquots to prevent freeze-thaw cycles.

**Precautions**

RPAP3 Antibody (Center) is for research use only and not for use in diagnostic or therapeutic procedures.

**RPAP3 Antibody (Center) - Protein Information**

**Name** RPAP3

**Function** Forms an interface between the RNA polymerase II enzyme and chaperone/scaffolding protein, suggesting that it is required to connect RNA polymerase II to regulators of protein

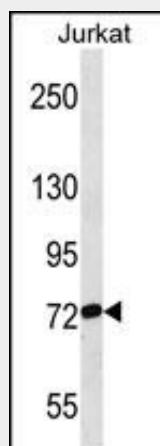
complex formation.

### **RPAP3 Antibody (Center) - Protocols**

Provided below are standard protocols that you may find useful for product applications.

- [Western Blot](#)
- [Blocking Peptides](#)
- [Dot Blot](#)
- [Immunohistochemistry](#)
- [Immunofluorescence](#)
- [Immunoprecipitation](#)
- [Flow Cytometry](#)
- [Cell Culture](#)

### **RPAP3 Antibody (Center) - Images**



RPAP3 Antibody (Center) (Cat. #AP18284c) western blot analysis in Jurkat cell line lysates (35ug/lane). This demonstrates the RPAP3 antibody detected the RPAP3 protein (arrow).

### **RPAP3 Antibody (Center) - Background**

This gene encodes an RNA polymerase II-associated protein. The encoded protein may function in transcriptional regulation and may also regulate apoptosis. Alternatively spliced transcript variants have been described.

### **RPAP3 Antibody (Center) - References**

Cloutier, P., et al. Methods 48(4):381-386(2009)  
Ni, L., et al. J. Cell. Biochem. 106(5):920-928(2009)  
Itsuki, Y., et al. FEBS Lett. 582(16):2365-2370(2008)  
Jeronimo, C., et al. Mol. Cell 27(2):262-274(2007)