

TCEAL2 Antibody (N-term)
Affinity Purified Rabbit Polyclonal Antibody (Pab)
Catalog # AP18289a**Specification**

TCEAL2 Antibody (N-term) - Product Information

Application	WB,E
Primary Accession	O9H3H9
Other Accession	NP_525129.1
Reactivity	Human
Host	Rabbit
Clonality	Polyclonal
Isotype	Rabbit IgG
Calculated MW	25850
Antigen Region	1-30

TCEAL2 Antibody (N-term) - Additional Information**Gene ID** 140597**Other Names**

Transcription elongation factor A protein-like 2, TCEA-like protein 2, Transcription elongation factor S-II protein-like 2, TCEAL2

Target/Specificity

This TCEAL2 antibody is generated from rabbits immunized with a KLH conjugated synthetic peptide between 1-30 amino acids from the N-terminal region of human TCEAL2.

Dilution

WB~~1:1000

Format

Purified polyclonal antibody supplied in PBS with 0.09% (W/V) sodium azide. This antibody is purified through a protein A column, followed by peptide affinity purification.

Storage

Maintain refrigerated at 2-8°C for up to 2 weeks. For long term storage store at -20°C in small aliquots to prevent freeze-thaw cycles.

Precautions

TCEAL2 Antibody (N-term) is for research use only and not for use in diagnostic or therapeutic procedures.

TCEAL2 Antibody (N-term) - Protein Information**Name** TCEAL2**Function** May be involved in transcriptional regulation.

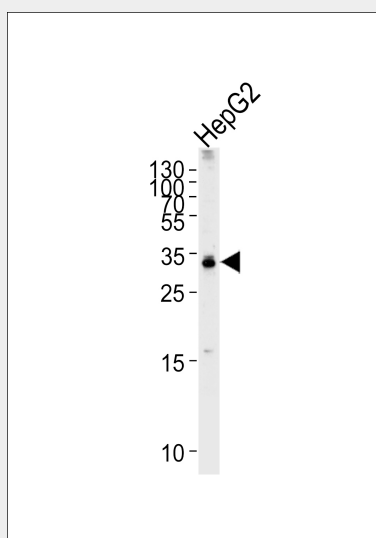
Cellular Location

Nucleus.

TCEAL2 Antibody (N-term) - Protocols

Provided below are standard protocols that you may find useful for product applications.

- [Western Blot](#)
- [Blocking Peptides](#)
- [Dot Blot](#)
- [Immunohistochemistry](#)
- [Immunofluorescence](#)
- [Immunoprecipitation](#)
- [Flow Cytometry](#)
- [Cell Culture](#)

TCEAL2 Antibody (N-term) - Images

Western blot analysis of lysate from HepG2 cell line, using TCEAL2 Antibody (N-term)(Cat. #AP18289a). AP18289a was diluted at 1:1000 at each lane. A goat anti-rabbit IgG H&L(HRP) at 1:5000 dilution was used as the secondary antibody. Lysate at 35ug per lane.

TCEAL2 Antibody (N-term) - Background

This gene encodes a member of the transcription elongation factor A (SII)-like (TCEAL) gene family. Members of this family contain TFA domains and may function as nuclear phosphoproteins that modulate transcription in a promoter context-dependent manner. Multiple family members are located on the X chromosome. [provided by RefSeq].

TCEAL2 Antibody (N-term) - References

Ross, M.T., et al. Nature 434(7031):325-337(2005)
Pillutla, R.C., et al. Genomics 56(2):217-220(1999)
Bussow, K., et al. Nucleic Acids Res. 26(21):5007-5008(1998)