

ZFP57 Antibody (Center)
Affinity Purified Rabbit Polyclonal Antibody (Pab)
Catalog # AP18299C**Specification**

ZFP57 Antibody (Center) - Product Information

Application	WB,E
Primary Accession	O9NU63
Other Accession	NP_001103279.2
Reactivity	Human
Host	Rabbit
Clonality	Polyclonal
Isotype	Rabbit IgG
Calculated MW	51919
Antigen Region	269-296

ZFP57 Antibody (Center) - Additional Information**Gene ID** 346171**Other Names**

Zinc finger protein 57 homolog, Zfp-57, Zinc finger protein 698, ZFP57, C6orf40, ZNF698

Target/Specificity

This ZFP57 antibody is generated from rabbits immunized with a KLH conjugated synthetic peptide between 269-296 amino acids from the Central region of human ZFP57.

Dilution

WB~~1:1000

Format

Purified polyclonal antibody supplied in PBS with 0.09% (W/V) sodium azide. This antibody is purified through a protein A column, followed by peptide affinity purification.

Storage

Maintain refrigerated at 2-8°C for up to 2 weeks. For long term storage store at -20°C in small aliquots to prevent freeze-thaw cycles.

Precautions

ZFP57 Antibody (Center) is for research use only and not for use in diagnostic or therapeutic procedures.

ZFP57 Antibody (Center) - Protein Information**Name** ZFP57 ([HGNC:18791](#))**Synonyms** C6orf40, ZNF698

Function Transcription regulator required to maintain maternal and paternal gene imprinting, a process by which gene expression is restricted in a parent of origin-specific manner by epigenetic modification of genomic DNA and chromatin, including DNA methylation. Acts by controlling DNA methylation during the earliest multicellular stages of development at multiple imprinting control regions (ICRs) (PubMed:[18622393](#), PubMed:[30602440](#)). Acts together with ZNF445, but ZNF445 seems to be the major factor in human early embryonic imprinting maintenance. In contrast, in mice, ZFP57 plays the predominant role in imprinting maintenance (PubMed:[30602440](#)). Required for the establishment of maternal methylation imprints at SNRPN locus. Acts as a transcriptional repressor in Schwann cells. Binds to a 5'-TGCCGC-3' consensus sequence and recognizes the methylated CpG within this element (By similarity).

Cellular Location

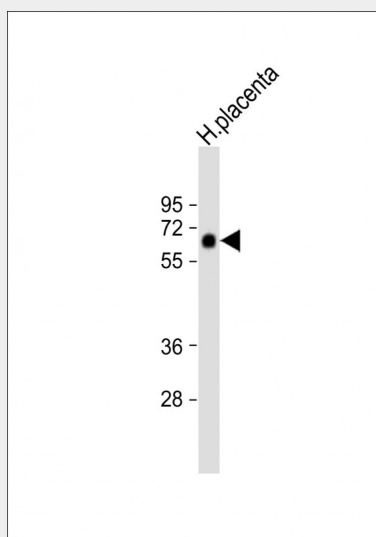
Nucleus. Note=Binds various differentially methylated regions (DMR)

ZFP57 Antibody (Center) - Protocols

Provided below are standard protocols that you may find useful for product applications.

- [Western Blot](#)
- [Blocking Peptides](#)
- [Dot Blot](#)
- [Immunohistochemistry](#)
- [Immunofluorescence](#)
- [Immunoprecipitation](#)
- [Flow Cytometry](#)
- [Cell Culture](#)

ZFP57 Antibody (Center) - Images



Anti-ZFP57 Antibody (Center) at 1:1000 dilution + human placenta lysate Lysates/proteins at 20 µg per lane. Secondary Goat Anti-Rabbit IgG, (H+L), Peroxidase conjugated at 1/10000 dilution. Predicted band size : 52 kDa Blocking/Dilution buffer: 5% NFDM/TBST.

ZFP57 Antibody (Center) - Background

The protein encoded by this gene is a zinc finger protein containing a KRAB domain. Studies in mouse suggest that this

protein may function as a transcriptional repressor. Mutations in this gene have been associated with transient neonatal diabetes mellitus type 1 (TNDM1).

ZFP57 Antibody (Center) - References

Spengler, S., et al. Eur J Med Genet 52(6):415-416(2009)
Barcellos, L.F., et al. PLoS Genet. 5 (10), E1000696 (2009) :
Tse, K.P., et al. Am. J. Hum. Genet. 85(2):194-203(2009)
Li, X., et al. Dev. Cell 15(4):547-557(2008)
Mackay, D.J., et al. Nat. Genet. 40(8):949-951(2008)