

**BRUNOL5 Antibody (Center)**  
**Affinity Purified Rabbit Polyclonal Antibody (Pab)**  
**Catalog # AP18320c****Specification**

---

**BRUNOL5 Antibody (Center) - Product Information**

Application	WB,E
Primary Accession	<a href="#">Q8N6W0</a>
Other Accession	<a href="#">NP_068757.2</a>
Reactivity	Human
Host	Rabbit
Clonality	Polyclonal
Isotype	Rabbit IgG
Calculated MW	52355
Antigen Region	195-222

**BRUNOL5 Antibody (Center) - Additional Information****Gene ID** 60680**Other Names**

CUGBP Elav-like family member 5, CELF-5, Bruno-like protein 5, CUG-BP- and ETR-3-like factor 5, RNA-binding protein BRUNOL-5, CELF5, BRUNOL5

**Target/Specificity**

This BRUNOL5 antibody is generated from rabbits immunized with a KLH conjugated synthetic peptide between 195-222 amino acids from the Central region of human BRUNOL5.

**Dilution**

WB~~1:1000

**Format**

Purified polyclonal antibody supplied in PBS with 0.09% (W/V) sodium azide. This antibody is purified through a protein A column, followed by peptide affinity purification.

**Storage**

Maintain refrigerated at 2-8°C for up to 2 weeks. For long term storage store at -20°C in small aliquots to prevent freeze-thaw cycles.

**Precautions**

BRUNOL5 Antibody (Center) is for research use only and not for use in diagnostic or therapeutic procedures.

**BRUNOL5 Antibody (Center) - Protein Information****Name** CELF5**Synonyms** BRUNOL5

**Function** RNA-binding protein implicated in the regulation of pre-mRNA alternative splicing. Mediates exon inclusion and/or exclusion in pre-mRNA that are subject to tissue-specific and developmentally regulated alternative splicing. Specifically activates exon 5 inclusion of cardiac isoforms of TNNT2 during heart remodeling at the juvenile to adult transition. Binds to muscle-specific splicing enhancer (MSE) intronic sites flanking the alternative exon 5 of TNNT2 pre-mRNA.

**Cellular Location**

Nucleus. Cytoplasm.

**Tissue Location**

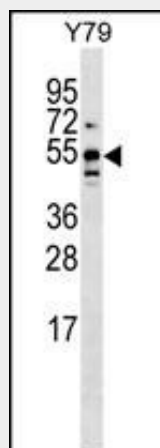
Expressed in brain..

### BRUNOL5 Antibody (Center) - Protocols

Provided below are standard protocols that you may find useful for product applications.

- [Western Blot](#)
- [Blocking Peptides](#)
- [Dot Blot](#)
- [Immunohistochemistry](#)
- [Immunofluorescence](#)
- [Immunoprecipitation](#)
- [Flow Cytometry](#)
- [Cell Culture](#)

### BRUNOL5 Antibody (Center) - Images



BRUNOL5 Antibody (Center) (Cat. #AP18320c) western blot analysis in Y79 cell line lysates (35ug/lane). This demonstrates the BRUNOL5 Antibody detected the BRUNOL5 protein (arrow).

### BRUNOL5 Antibody (Center) - Background

Members of the CELF/BRUNOL protein family contain two N-terminal RNA recognition motif (RRM) domains, one C-terminal RRM domain, and a divergent segment of 160-230 aa between the second and third RRM domains. Members of this protein family regulate pre-mRNA alternative splicing and may also be involved in mRNA editing, and translation. Alternatively spliced transcript variants have been identified in this gene.

### **BRUNOL5 Antibody (Center) - References**

Ladd, A.N., et al. Mol. Cell. Biol. 21(4):1285-1296(2001)  
Good, P.J., et al. J. Biol. Chem. 275(37):28583-28592(2000)