

SCML1 Antibody (N-term)
Affinity Purified Rabbit Polyclonal Antibody (Pab)
Catalog # AP18386a**Specification**

SCML1 Antibody (N-term) - Product Information

Application	WB,E
Primary Accession	O9UN30
Other Accession	NP_001032624.1
Reactivity	Human
Host	Rabbit
Clonality	Polyclonal
Isotype	Rabbit IgG
Calculated MW	37447
Antigen Region	15-41

SCML1 Antibody (N-term) - Additional Information**Gene ID** 6322**Other Names**

Sex comb on midleg-like protein 1, SCML1

Target/Specificity

This SCML1 antibody is generated from rabbits immunized with a KLH conjugated synthetic peptide between 15-41 amino acids from the N-terminal region of human SCML1.

Dilution

WB~~1:1000

Format

Purified polyclonal antibody supplied in PBS with 0.09% (W/V) sodium azide. This antibody is purified through a protein A column, followed by peptide affinity purification.

Storage

Maintain refrigerated at 2-8°C for up to 2 weeks. For long term storage store at -20°C in small aliquots to prevent freeze-thaw cycles.

Precautions

SCML1 Antibody (N-term) is for research use only and not for use in diagnostic or therapeutic procedures.

SCML1 Antibody (N-term) - Protein Information**Name** SCML1

Function Putative Polycomb group (PcG) protein. PcG proteins act by forming multiprotein complexes, which are required to maintain the transcriptionally repressive state of homeotic

genes throughout development. May be involved in spermatogenesis during sexual maturation (By similarity).

Cellular Location

Nucleus.

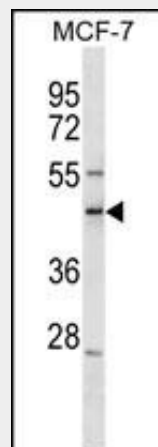
Tissue Location

Ubiquitous. Expressed in fetal and adult tissues.

SCML1 Antibody (N-term) - Protocols

Provided below are standard protocols that you may find useful for product applications.

- [Western Blot](#)
- [Blocking Peptides](#)
- [Dot Blot](#)
- [Immunohistochemistry](#)
- [Immunofluorescence](#)
- [Immunoprecipitation](#)
- [Flow Cytometry](#)
- [Cell Culture](#)

SCML1 Antibody (N-term) - Images

SCML1 Antibody (N-term) (Cat. #AP18386a) western blot analysis in MCF-7 cell line lysates (35ug/lane). This demonstrates the SCML1 Antibody detected the SCML1 protein (arrow).

SCML1 Antibody (N-term) - Background

Putative Polycomb group (PcG) protein. PcG proteins act by forming multiprotein complexes, which are required to maintain the transcriptionally repressive state of homeotic genes throughout development. May be involved in spermatogenesis during sexual maturation (By similarity).

SCML1 Antibody (N-term) - References

Wu, H.H., et al. BMC Evol. Biol. 8, 192 (2008) :
Ross, M.T., et al. Nature 434(7031):325-337(2005)
van de Vosse, E., et al. Genomics 49(1):96-102(1998)