

FH Antibody (N-term)
Affinity Purified Rabbit Polyclonal Antibody (Pab)
Catalog # AP18400a**Specification**

FH Antibody (N-term) - Product Information

Application	IHC, WB,E
Primary Accession	P07954
Other Accession	P14408 , P10173 , P97807 , Q60HF9 , NP_000134.2
Reactivity	Human
Predicted	Monkey, Mouse, Pig, Rat
Host	Rabbit
Clonality	Polyclonal
Isotype	Rabbit IgG
Calculated MW	54637
Antigen Region	107-135

FH Antibody (N-term) - Additional Information**Gene ID** 2271**Other Names**

Fumarate hydratase, mitochondrial, Fumarase, FH

Target/Specificity

This FH antibody is generated from rabbits immunized with a KLH conjugated synthetic peptide between 107-135 amino acids from the N-terminal region of human FH.

Dilution

IHC~~1:800

WB~~1:1000

Format

Purified polyclonal antibody supplied in PBS with 0.09% (W/V) sodium azide. This antibody is purified through a protein A column, followed by peptide affinity purification.

Storage

Maintain refrigerated at 2-8°C for up to 2 weeks. For long term storage store at -20°C in small aliquots to prevent freeze-thaw cycles.

Precautions

FH Antibody (N-term) is for research use only and not for use in diagnostic or therapeutic procedures.

FH Antibody (N-term) - Protein Information**Name** FH {ECO:0000303|PubMed:27037871, ECO:0000312|HGNC:HGNC:3700}

Function Catalyzes the reversible stereospecific interconversion of fumarate to L-malate (PubMed:[30761759](#)). Experiments in other species have demonstrated that specific isoforms of this protein act in defined pathways and favor one direction over the other (Probable).

Cellular Location

[Isoform Mitochondrial]: Mitochondrion

Tissue Location

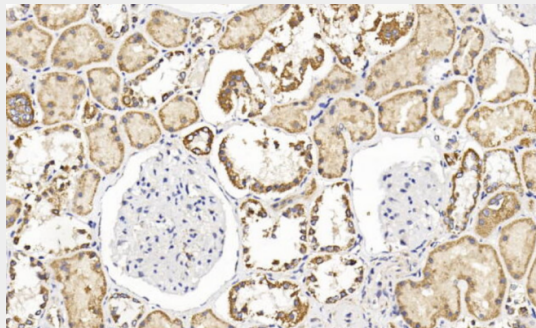
Expressed in red blood cells; underexpressed in red blood cells (cytoplasm) of patients with hereditary non-spherocytic hemolytic anemia of unknown etiology.

FH Antibody (N-term) - Protocols

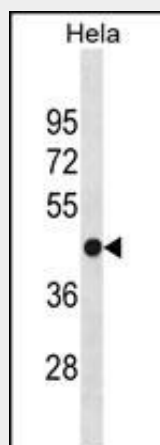
Provided below are standard protocols that you may find useful for product applications.

- [Western Blot](#)
- [Blocking Peptides](#)
- [Dot Blot](#)
- [Immunohistochemistry](#)
- [Immunofluorescence](#)
- [Immunoprecipitation](#)
- [Flow Cytometry](#)
- [Cell Culture](#)

FH Antibody (N-term) - Images



Immunohistochemical analysis of paraffin-embedded Human kidney section using Pink1 (Cat#AP18400a). AP18400a was diluted at 1:800 dilution. A undiluted biotinylated goat polyvalent antibody was used as the secondary, followed by DAB staining.



FH Antibody (N-term) (Cat. #AP18400a) western blot analysis in Hela cell line lysates (35ug/lane). This demonstrates the FH Antibody detected the FH protein (arrow).

FH Antibody (N-term) - Background

The protein encoded by this gene is an enzymatic component of the tricarboxylic acid (TCA) cycle, or Krebs cycle, and catalyzes the formation of L-malate from fumarate. It exists in both a cytosolic form and an N-terminal extended form, differing only in the translation start site used. The N-terminal extended form is targeted to the mitochondrion, where the removal of the extension generates the same form as in the cytoplasm. It is similar to some thermostable class II fumarases and functions as a homotetramer. Mutations in this gene can cause fumarase deficiency and lead to progressive encephalopathy.

FH Antibody (N-term) - References

Shimada, M., et al. Hum. Genet. 128(4):433-441(2010)
Allegri, G., et al. J. Inherit. Metab. Dis. 33(4):411-419(2010)
Yogev, O., et al. PLoS Biol. 8 (3), E1000328 (2010) :
Yang, Y., et al. Cancer Genet. Cytogenet. 196(1):45-55(2010)
Rikova, K., et al. Cell 131(6):1190-1203(2007)