

GDPD2 Antibody (Center)
Affinity Purified Rabbit Polyclonal Antibody (Pab)
Catalog # AP18406c

Specification

GDPD2 Antibody (Center) - Product Information

Application	WB,E
Primary Accession	O9HCC8
Other Accession	NP_060181.2
Reactivity	Human
Host	Rabbit
Clonality	Polyclonal
Isotype	Rabbit IgG
Calculated MW	61729
Antigen Region	305-334

GDPD2 Antibody (Center) - Additional Information

Gene ID 54857

Other Names

Glycerophosphoinositol inositolphosphodiesterase GDPD2, Glycerophosphodiester phosphodiesterase 3, Glycerophosphodiester phosphodiesterase domain-containing protein 2, Osteoblast differentiation promoting factor, GDPD2, GDE3, OBDPF

Target/Specificity

This GDPD2 antibody is generated from rabbits immunized with a KLH conjugated synthetic peptide between 305-334 amino acids from the Central region of human GDPD2.

Dilution

WB~~1:1000

Format

Purified polyclonal antibody supplied in PBS with 0.09% (W/V) sodium azide. This antibody is purified through a protein A column, followed by peptide affinity purification.

Storage

Maintain refrigerated at 2-8°C for up to 2 weeks. For long term storage store at -20°C in small aliquots to prevent freeze-thaw cycles.

Precautions

GDPD2 Antibody (Center) is for research use only and not for use in diagnostic or therapeutic procedures.

GDPD2 Antibody (Center) - Protein Information

Name GDPD2

Synonyms GDE3, OBDPF

Function Has glycerophosphoinositol inositolphosphodiesterase activity and specifically hydrolyzes glycerophosphoinositol, with no activity for other substrates such as glycerophosphoinositol 4-phosphate, glycerophosphocholine, glycerophosphoethanolamine, and glycerophosphoserine. Accelerates the program of osteoblast differentiation and growth. May play a role in remodeling of the actin cytoskeleton (By similarity).

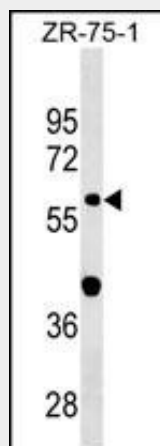
Cellular Location

Cell membrane; Multi-pass membrane protein. Cytoplasm. Cytoplasm, cytoskeleton.
Note=Colocalizes with the actin cytoskeleton.

GDPD2 Antibody (Center) - Protocols

Provided below are standard protocols that you may find useful for product applications.

- [Western Blot](#)
- [Blocking Peptides](#)
- [Dot Blot](#)
- [Immunohistochemistry](#)
- [Immunofluorescence](#)
- [Immunoprecipitation](#)
- [Flow Cytometry](#)
- [Cell Culture](#)

GDPD2 Antibody (Center) - Images

GDPD2 Antibody (Center) (Cat. #AP18406c) western blot analysis in ZR-75-1 cell line lysates (35ug/lane). This demonstrates the GDPD2 Antibody detected the GDPD2 protein (arrow).

GDPD2 Antibody (Center) - Background

This gene encodes a member of the glycerophosphodiester phosphodiesterase enzyme family. The encoded protein hydrolyzes glycerophosphoinositol to produce inositol 1-phosphate and glycerol. This protein may have a role in osteoblast differentiation and growth. Alternate splicing results in multiple transcript variants.

GDPD2 Antibody (Center) - References

Corda, D., et al. J. Biol. Chem. 284(37):24848-24856(2009)
Yanaka, N., et al. J. Biol. Chem. 278(44):43595-43602(2003)