

**RAB36 Antibody (C-term)**  
**Affinity Purified Rabbit Polyclonal Antibody (Pab)**  
**Catalog # AP18408b**

**Specification**

---

**RAB36 Antibody (C-term) - Product Information**

Application	WB,E
Primary Accession	<a href="#">O95755</a>
Other Accession	<a href="#">NP_004905.2</a>
Reactivity	Human
Host	Rabbit
Clonality	Polyclonal
Isotype	Rabbit IgG
Calculated MW	29680
Antigen Region	301-328

**RAB36 Antibody (C-term) - Additional Information**

**Gene ID** 9609

**Other Names**

Ras-related protein Rab-36, RAB36

**Target/Specificity**

This RAB36 antibody is generated from rabbits immunized with a KLH conjugated synthetic peptide between 301-328 amino acids from the C-terminal region of human RAB36.

**Dilution**

WB~~1:1000

**Format**

Purified polyclonal antibody supplied in PBS with 0.09% (W/V) sodium azide. This antibody is purified through a protein A column, followed by peptide affinity purification.

**Storage**

Maintain refrigerated at 2-8°C for up to 2 weeks. For long term storage store at -20°C in small aliquots to prevent freeze-thaw cycles.

**Precautions**

RAB36 Antibody (C-term) is for research use only and not for use in diagnostic or therapeutic procedures.

**RAB36 Antibody (C-term) - Protein Information**

**Name** RAB36

**Function** Protein transport. Probably involved in vesicular traffic (By similarity).

**Cellular Location**

Golgi apparatus membrane; Lipid-anchor.

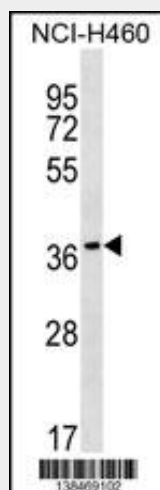
**Tissue Location**

Ubiquitously present in all tissues examined.

**RAB36 Antibody (C-term) - Protocols**

Provided below are standard protocols that you may find useful for product applications.

- [Western Blot](#)
- [Blocking Peptides](#)
- [Dot Blot](#)
- [Immunohistochemistry](#)
- [Immunofluorescence](#)
- [Immunoprecipitation](#)
- [Flow Cytometry](#)
- [Cell Culture](#)

**RAB36 Antibody (C-term) - Images**

RAB36 Antibody (C-term) (Cat. #AP18408b) western blot analysis in NCI-H460 cell line lysates (35ug/lane). This demonstrates the RAB36 Antibody detected the RAB36 protein (arrow).

**RAB36 Antibody (C-term) - Background**

RAB36 is a protein transport. Probably involved in vesicular traffic (By similarity).

**RAB36 Antibody (C-term) - References**

Chen, L., et al. Mol. Membr. Biol. 27(1):24-31(2010)  
Sugiyama, N., et al. Mol. Cell Proteomics 6(6):1103-1109(2007)  
Wang, L., et al. J. Mol. Med. 83(10):812-821(2005)  
Collins, J.E., et al. Genome Biol. 5 (10), R84 (2004) :  
Zhou, J., et al. Gene 241(1):133-141(2000)