

METTL2B Antibody (N-term)
Affinity Purified Rabbit Polyclonal Antibody (Pab)
Catalog # AP18416a**Specification**

METTL2B Antibody (N-term) - Product Information

Application	WB,E
Primary Accession	Q6P1Q9
Other Accession	NP_060866.2
Reactivity	Human
Host	Rabbit
Clonality	Polyclonal
Isotype	Rabbit IgG
Calculated MW	43426
Antigen Region	1-30

METTL2B Antibody (N-term) - Additional Information**Gene ID** 55798**Other Names**

Methyltransferase-like protein 2B, 211-, METTL2B

Target/Specificity

This METTL2B antibody is generated from rabbits immunized with a KLH conjugated synthetic peptide between 1-30 amino acids from the N-terminal region of human METTL2B.

Dilution

WB~~1:1000

Format

Purified polyclonal antibody supplied in PBS with 0.09% (W/V) sodium azide. This antibody is purified through a protein A column, followed by peptide affinity purification.

Storage

Maintain refrigerated at 2-8°C for up to 2 weeks. For long term storage store at -20°C in small aliquots to prevent freeze-thaw cycles.

Precautions

METTL2B Antibody (N-term) is for research use only and not for use in diagnostic or therapeutic procedures.

METTL2B Antibody (N-term) - Protein Information**Name** METTL2B {ECO:0000303|PubMed:28655767, ECO:0000312|HGNC:HGNC:18272}**Function** S-adenosyl-L-methionine-dependent methyltransferase that mediates N(3)-methylcytidine modification of residue 32 of the tRNA anticodon loop of tRNA(Thr)(UGU) and

tRNA(Arg)(CCU).

Cellular Location

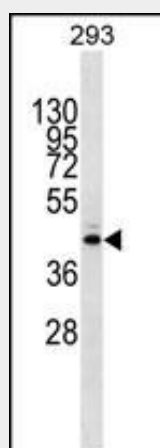
Cytoplasm.

METTL2B Antibody (N-term) - Protocols

Provided below are standard protocols that you may find useful for product applications.

- [Western Blot](#)
- [Blocking Peptides](#)
- [Dot Blot](#)
- [Immunohistochemistry](#)
- [Immunofluorescence](#)
- [Immunoprecipitation](#)
- [Flow Cytometry](#)
- [Cell Culture](#)

METTL2B Antibody (N-term) - Images



METTL2B Antibody (N-term) (Cat. #AP18416a) western blot analysis in 293 cell line lysates (35ug/lane). This demonstrates the METTL2B Antibody detected the METTL2B protein (arrow).

METTL2B Antibody (N-term) - Background

This gene is a member of a family of methyltransferases that share homology with, but are distinct from, the UbiE family of methyltransferases. Alternatively spliced variants which encode different protein isoforms have been described; however, not all variants have been fully characterized.

METTL2B Antibody (N-term) - References

Zody, M.C., et al. Nature 440(7087):1045-1049(2006)
Zhang, S.X., et al. Gene 280 (1-2), 135-144 (2001) :