

**GYG2 Antibody (C-term)**  
**Affinity Purified Rabbit Polyclonal Antibody (Pab)**  
**Catalog # AP18439b**

**Specification**

---

**GYG2 Antibody (C-term) - Product Information**

Application	WB,E
Primary Accession	<a href="#">O15488</a>
Other Accession	<a href="#">NP_001073324.1</a>
Reactivity	Human
Host	Rabbit
Clonality	Polyclonal
Isotype	Rabbit IgG
Calculated MW	55184
Antigen Region	457-483

**GYG2 Antibody (C-term) - Additional Information**

**Gene ID** 8908

**Other Names**

Glycogenin-2, GN-2, GN2, GYG2

**Target/Specificity**

This GYG2 antibody is generated from rabbits immunized with a KLH conjugated synthetic peptide between 457-483 amino acids from the C-terminal region of human GYG2.

**Dilution**

WB~~1:1000

**Format**

Purified polyclonal antibody supplied in PBS with 0.09% (W/V) sodium azide. This antibody is purified through a protein A column, followed by peptide affinity purification.

**Storage**

Maintain refrigerated at 2-8°C for up to 2 weeks. For long term storage store at -20°C in small aliquots to prevent freeze-thaw cycles.

**Precautions**

GYG2 Antibody (C-term) is for research use only and not for use in diagnostic or therapeutic procedures.

**GYG2 Antibody (C-term) - Protein Information**

**Name** GYG2

**Function** Glycogenin participates in the glycogen biosynthetic process along with glycogen synthase and glycogen branching enzyme. It self- glucosylates, via an inter-subunit mechanism, to

form an oligosaccharide primer that serves as substrate for glycogen synthase.

#### **Tissue Location**

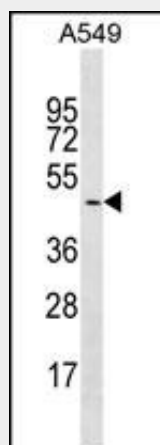
Detected in liver (at protein level) (PubMed:9857012). Expressed preferentially in liver, heart, and pancreas (PubMed:9346895).

#### **GYG2 Antibody (C-term) - Protocols**

Provided below are standard protocols that you may find useful for product applications.

- [Western Blot](#)
- [Blocking Peptides](#)
- [Dot Blot](#)
- [Immunohistochemistry](#)
- [Immunofluorescence](#)
- [Immunoprecipitation](#)
- [Flow Cytometry](#)
- [Cell Culture](#)

#### **GYG2 Antibody (C-term) - Images**



GYG2 Antibody (C-term) (Cat. #AP18439b) western blot analysis in A549 cell line lysates (35ug/lane). This demonstrates the GYG2 Antibody detected the GYG2 protein (arrow).

#### **GYG2 Antibody (C-term) - Background**

This gene encodes a member of the the glycogenin family. Glycogenin is a self-glucosylating protein involved in the initiation reactions of glycogen biosynthesis. A gene on chromosome 3 encodes the muscle glycogenin and this X-linked gene encodes the glycogenin mainly present in liver; both are involved in blood glucose homeostasis. This gene has a short version on chromosome Y, which is 3' truncated and can not make a functional protein. Multiple alternatively spliced transcript variants encoding different isoforms have been identified.

#### **GYG2 Antibody (C-term) - References**

Gibbons, B.J., et al. J. Mol. Biol. 319(2):463-477(2002)  
Harris, R.A., et al. Proteomics 2(2):212-223(2002)

Zhai, L., et al. Gene 242 (1-2), 229-235 (2000) :  
Mu, J., et al. J. Biol. Chem. 273(52):34850-34856(1998)  
Orho, M., et al. J. Clin. Invest. 102(3):507-515(1998)