

**FBLL1 Antibody (Center)**  
**Affinity Purified Rabbit Polyclonal Antibody (Pab)**  
**Catalog # AP18446c****Specification**

---

**FBLL1 Antibody (Center) - Product Information**

Application	WB,E
Primary Accession	<a href="#">A6NHQ2</a>
Other Accession	<a href="#">Q80WS3</a>
Reactivity	Human
Predicted	Mouse
Host	Rabbit
Clonality	Polyclonal
Isotype	Rabbit IgG
Calculated MW	34803
Antigen Region	209-236

**FBLL1 Antibody (Center) - Additional Information****Other Names**

rRNA/tRNA 2'-O-methyltransferase fibrillarin-like protein 1, 211-, Protein-glutamine methyltransferase, FBLL1

**Target/Specificity**

This FBLL1 antibody is generated from rabbits immunized with a KLH conjugated synthetic peptide between 209-236 amino acids from the Central region of human FBLL1.

**Dilution**

WB~~1:1000

**Format**

Purified polyclonal antibody supplied in PBS with 0.09% (W/V) sodium azide. This antibody is purified through a protein A column, followed by peptide affinity purification.

**Storage**

Maintain refrigerated at 2-8°C for up to 2 weeks. For long term storage store at -20°C in small aliquots to prevent freeze-thaw cycles.

**Precautions**

FBLL1 Antibody (Center) is for research use only and not for use in diagnostic or therapeutic procedures.

**FBLL1 Antibody (Center) - Protein Information****Name** FBLL1

**Function** S-adenosyl-L-methionine-dependent methyltransferase that has the ability to methylate both RNAs and proteins. Involved in pre-rRNA processing by catalyzing the site-specific 2'-hydroxyl

methylation of ribose moieties in pre-ribosomal RNA. Also acts as a protein methyltransferase by mediating methylation of glutamine residues (By similarity).

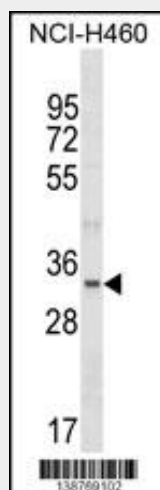
**Cellular Location**

Nucleus, nucleolus. Note=Fibrillar region of the nucleolus.

**FBLL1 Antibody (Center) - Protocols**

Provided below are standard protocols that you may find useful for product applications.

- [Western Blot](#)
- [Blocking Peptides](#)
- [Dot Blot](#)
- [Immunohistochemistry](#)
- [Immunofluorescence](#)
- [Immunoprecipitation](#)
- [Flow Cytometry](#)
- [Cell Culture](#)

**FBLL1 Antibody (Center) - Images**

FBLL1 Antibody (Center) (Cat. #AP18446c) western blot analysis in NCI-H460 cell line lysates (35ug/lane). This demonstrates the FBLL1 Antibody detected the FBLL1 protein (arrow).

**FBLL1 Antibody (Center) - Background**

FBLL1 is involved in pre-rRNA processing. Utilizes the methyl donor S-adenosyl-L-methionine to catalyze the site-specific 2'-hydroxyl methylation of ribose moieties in pre-ribosomal RNA (By similarity).