

**GABARAPL3 Antibody (Center)**  
**Affinity Purified Rabbit Polyclonal Antibody (Pab)**  
**Catalog # AP18449c****Specification**

---

**GABARAPL3 Antibody (Center) - Product Information**

Application	WB,E
Primary Accession	<a href="#">Q9BY60</a>
Reactivity	Human
Host	Rabbit
Clonality	Polyclonal
Isotype	Rabbit IgG
Calculated MW	13976
Antigen Region	27-53

**GABARAPL3 Antibody (Center) - Additional Information****Other Names**

Gamma-aminobutyric acid receptor-associated protein-like 3, GABA(A) receptor-associated protein-like 3, GABARAPL3

**Target/Specificity**

This GABARAPL3 antibody is generated from rabbits immunized with a KLH conjugated synthetic peptide between 27-53 amino acids from the Central region of human GABARAPL3.

**Dilution**

WB~~1:1000

**Format**

Purified polyclonal antibody supplied in PBS with 0.09% (W/V) sodium azide. This antibody is purified through a protein A column, followed by peptide affinity purification.

**Storage**

Maintain refrigerated at 2-8°C for up to 2 weeks. For long term storage store at -20°C in small aliquots to prevent freeze-thaw cycles.

**Precautions**

GABARAPL3 Antibody (Center) is for research use only and not for use in diagnostic or therapeutic procedures.

**GABARAPL3 Antibody (Center) - Protein Information****Name** GABARAPL3

**Function** Ubiquitin-like modifier involved in autophagosome formation. Whereas LC3s are involved in elongation of the phagophore membrane, the GABARAP/GATE-16 subfamily is essential for a later stage in autophagosome maturation (By similarity).

**Cellular Location**

Cytoplasm, cytoskeleton. Cytoplasmic vesicle, autophagosome membrane; Lipid-anchor

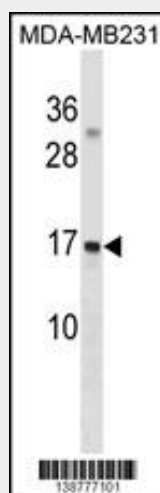
**Tissue Location**

Ubiquitous. Expressed at very high levels in the brain, heart, peripheral blood leukocytes, liver, kidney, placenta and skeletal muscle. Expressed at very low levels in thymus and small intestine.

**GABARAPL3 Antibody (Center) - Protocols**

Provided below are standard protocols that you may find useful for product applications.

- [Western Blot](#)
- [Blocking Peptides](#)
- [Dot Blot](#)
- [Immunohistochemistry](#)
- [Immunofluorescence](#)
- [Immunoprecipitation](#)
- [Flow Cytometry](#)
- [Cell Culture](#)

**GABARAPL3 Antibody (Center) - Images**

GABARAPL3 Antibody (Center) (Cat. #AP18449c) western blot analysis in MDA-MB231 cell line lysates (35ug/lane). This demonstrates the GABARAPL3 Antibody detected the GABARAPL3 protein (arrow).

**GABARAPL3 Antibody (Center) - Background**

The function of this protein remains unknown.