

**HMBOX1 Antibody (Center)**  
**Affinity Purified Rabbit Polyclonal Antibody (Pab)**  
**Catalog # AP18472c****Specification**

---

**HMBOX1 Antibody (Center) - Product Information**

Application	WB,E
Primary Accession	<a href="#">Q6NT76</a>
Other Accession	<a href="#">Q8BJA3</a> , <a href="#">NP_001129198.1</a>
Reactivity	Human, Mouse
Host	Rabbit
Clonality	Polyclonal
Isotype	Rabbit IgG
Calculated MW	47278
Antigen Region	197-223

**HMBOX1 Antibody (Center) - Additional Information****Gene ID** 79618**Other Names**

Homeobox-containing protein 1, HMBOX1

**Target/Specificity**

This HMBOX1 antibody is generated from rabbits immunized with a KLH conjugated synthetic peptide between 197-223 amino acids from the Central region of human HMBOX1.

**Dilution**

WB~~1:1000

**Format**

Purified polyclonal antibody supplied in PBS with 0.09% (W/V) sodium azide. This antibody is purified through a protein A column, followed by peptide affinity purification.

**Storage**

Maintain refrigerated at 2-8°C for up to 2 weeks. For long term storage store at -20°C in small aliquots to prevent freeze-thaw cycles.

**Precautions**

HMBOX1 Antibody (Center) is for research use only and not for use in diagnostic or therapeutic procedures.

**HMBOX1 Antibody (Center) - Protein Information****Name** HMBOX1 {ECO:0000303|PubMed:16825764}**Function** Binds directly to 5'-TTAGGG-3' repeats in telomeric DNA (PubMed:[23813958](#), PubMed:[23685356](#)). Associates with the telomerase complex at sites of active telomere processing

and positively regulates telomere elongation (PubMed:[23685356](#)). Important for TERT binding to chromatin, indicating a role in recruitment of the telomerase complex to telomeres (By similarity). Also plays a role in the alternative lengthening of telomeres (ALT) pathway in telomerase-negative cells where it promotes formation and/or maintenance of ALT-associated promyelocytic leukemia bodies (APBs) (PubMed:[23813958](#)). Enhances formation of telomere C-circles in ALT cells, suggesting a possible role in telomere recombination (PubMed:[23813958](#)). Might also be involved in the DNA damage response at telomeres (PubMed:[23813958](#)).

#### Cellular Location

Nucleus. Cytoplasm. Chromosome, telomere. Nucleus, Cajal body. Nucleus, PML body. Note=Predominantly detected in cytoplasm (PubMed:16825764, PubMed:19728927). Localizes in a dynamic manner to actively processed telomeres (PubMed:23685356). Localizes to the periphery of Cajal bodies (PubMed:23685356). Associates with PML nuclear bodies in telomerase-negative cells (PubMed:23813958)

#### Tissue Location

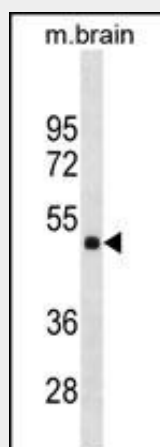
Ubiquitous. Detected in pancreas, brain, spleen, placenta, prostate, thymus, liver, heart, bone marrow, skeletal muscle, stomach, uterus, testis, kidney, ovary, colon, lung, cardiac muscle and thyroid gland.

### HMBOX1 Antibody (Center) - Protocols

Provided below are standard protocols that you may find useful for product applications.

- [Western Blot](#)
- [Blocking Peptides](#)
- [Dot Blot](#)
- [Immunohistochemistry](#)
- [Immunofluorescence](#)
- [Immunoprecipitation](#)
- [Flow Cytometry](#)
- [Cell Culture](#)

### HMBOX1 Antibody (Center) - Images



HMBOX1 Antibody (Center) (Cat. #AP18472c) western blot analysis in mouse brain tissue lysates (35ug/lane). This demonstrates the HMBOX1 antibody detected the HMBOX1 protein (arrow).

### HMBOX1 Antibody (Center) - Background

Transcription factor. Isoform 1 acts as a transcriptional repressor. Isoform 4 has very low activity as a transcriptional repressor.

#### **HMBOX1 Antibody (Center) - References**

Rose, J.E., et al. Mol. Med. 16 (7-8), 247-253 (2010) :  
Zhang, M., et al. Mol. Biol. Rep. 37(6):2767-2772(2010)  
Dai, J., et al. Cell. Mol. Immunol. 6(4):261-268(2009)  
De Marco, A., et al. Retrovirology 5, 98 (2008) :  
Chen, S., et al. Cytogenet. Genome Res. 114(2):131-136(2006)