

**PPP4R2 Antibody (Center)**  
**Affinity Purified Rabbit Polyclonal Antibody (Pab)**  
**Catalog # AP18485c**

**Specification**

---

**PPP4R2 Antibody (Center) - Product Information**

Application	WB,E
Primary Accession	<a href="#">O9NY27</a>
Other Accession	<a href="#">NP_777567.1</a>
Reactivity	Human, Mouse
Host	Rabbit
Clonality	Polyclonal
Isotype	Rabbit IgG
Calculated MW	46898
Antigen Region	228-254

**PPP4R2 Antibody (Center) - Additional Information**

**Gene ID** 151987

**Other Names**

Serine/threonine-protein phosphatase 4 regulatory subunit 2, PPP4R2

**Target/Specificity**

This PPP4R2 antibody is generated from rabbits immunized with a KLH conjugated synthetic peptide between 228-254 amino acids from the Central region of human PPP4R2.

**Dilution**

WB~~1:1000

**Format**

Purified polyclonal antibody supplied in PBS with 0.09% (W/V) sodium azide. This antibody is purified through a protein A column, followed by peptide affinity purification.

**Storage**

Maintain refrigerated at 2-8°C for up to 2 weeks. For long term storage store at -20°C in small aliquots to prevent freeze-thaw cycles.

**Precautions**

PPP4R2 Antibody (Center) is for research use only and not for use in diagnostic or therapeutic procedures.

**PPP4R2 Antibody (Center) - Protein Information**

**Name** PPP4R2

**Function** Regulatory subunit of serine/threonine-protein phosphatase 4 (PP4). May regulate the activity of PPP4C at centrosomal microtubule organizing centers. Its interaction with the SMN

complex leads to enhance the temporal localization of snRNPs, suggesting a role of PPP4C in maturation of spliceosomal snRNPs. The PPP4C-PPP4R2-PPP4R3A PP4 complex specifically dephosphorylates H2AX phosphorylated on 'Ser-140' (gamma-H2AX) generated during DNA replication and required for DNA double strand break repair. Mediates RPA2 dephosphorylation by recruiting PPP4C to RPA2 in a DNA damage-dependent manner. RPA2 dephosphorylation is required for the efficient RPA2-mediated recruitment of RAD51 to chromatin following double strand breaks, an essential step for DNA repair.

#### Cellular Location

Cytoplasm, cytoskeleton, microtubule organizing center, centrosome. Nucleus. Note=Ionizing radiation induces relocalization to nuclear foci and colocalization with RPA2

#### Tissue Location

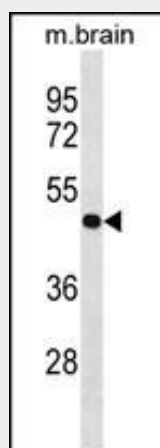
Widely expressed..

### PPP4R2 Antibody (Center) - Protocols

Provided below are standard protocols that you may find useful for product applications.

- [Western Blot](#)
- [Blocking Peptides](#)
- [Dot Blot](#)
- [Immunohistochemistry](#)
- [Immunofluorescence](#)
- [Immunoprecipitation](#)
- [Flow Cytometry](#)
- [Cell Culture](#)

### PPP4R2 Antibody (Center) - Images



PPP4R2 Antibody (Center) (Cat. #AP18485c) western blot analysis in mouse brain tissue lysates (35ug/lane). This demonstrates the PPP4R2 antibody detected the PPP4R2 protein (arrow).

### PPP4R2 Antibody (Center) - Background

Regulatory subunit of serine/threonine-protein phosphatase 4 (PP4). May regulate the activity of PPP4C at centrosomal microtubule organizing centers. Its interaction with the SMN complex leads to enhance the temporal localization of snRNPs, suggesting a role of PPP4C in maturation of spliceosomal snRNPs. The PPP4C-PPP4R2-PPP4R3A PP4 complex specifically dephosphorylates H2AFX phosphorylated on 'Ser-140' (gamma-H2AFX) generated during DNA replication and required

for DNA DSB repair.

**PPP4R2 Antibody (Center) - References**

Lee, D.H., et al. Nat. Struct. Mol. Biol. 17(3):365-372(2010)  
Chen, G.L., et al. J. Biol. Chem. 283(43):29273-29284(2008)  
Chowdhury, D., et al. Mol. Cell 31(1):33-46(2008)  
Ewing, R.M., et al. Mol. Syst. Biol. 3, 89 (2007) :  
Gingras, A.C., et al. Mol. Cell Proteomics 4(11):1725-1740(2005)