

**POC1A Antibody (N-term)**  
**Affinity Purified Rabbit Polyclonal Antibody (Pab)**  
**Catalog # AP18491a**

**Specification**

---

**POC1A Antibody (N-term) - Product Information**

Application	WB,E
Primary Accession	<a href="#">Q8NBT0</a>
Other Accession	<a href="#">Q8JZX3</a> , <a href="#">Q7ZVF0</a> , <a href="#">NP_001155052.1</a>
Reactivity	Human, Mouse
Predicted	Zebrafish
Host	Rabbit
Clonality	Polyclonal
Isotype	Rabbit IgG
Calculated MW	45009
Antigen Region	34-61

**POC1A Antibody (N-term) - Additional Information**

**Gene ID** 25886

**Other Names**

POC1 centriolar protein homolog A, Pix2, Proteome of centriole protein 1A, WD repeat-containing protein 51A, POC1A, WDR51A

**Target/Specificity**

This POC1A antibody is generated from rabbits immunized with a KLH conjugated synthetic peptide between 34-61 amino acids from the N-terminal region of human POC1A.

**Dilution**

WB~~1:1000

**Format**

Purified polyclonal antibody supplied in PBS with 0.09% (W/V) sodium azide. This antibody is purified through a protein A column, followed by peptide affinity purification.

**Storage**

Maintain refrigerated at 2-8°C for up to 2 weeks. For long term storage store at -20°C in small aliquots to prevent freeze-thaw cycles.

**Precautions**

POC1A Antibody (N-term) is for research use only and not for use in diagnostic or therapeutic procedures.

**POC1A Antibody (N-term) - Protein Information**

**Name** POC1A

**Synonyms** WDR51A

**Function** Plays an important role in centriole assembly and/or stability and ciliogenesis. Involved in early steps of centriole duplication, as well as in the later steps of centriole length control. Acts in concert with POC1B to ensure centriole integrity and proper mitotic spindle formation.

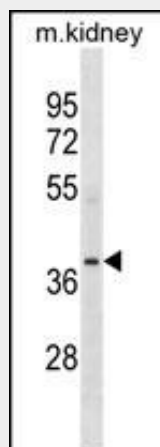
**Cellular Location**

Cytoplasm, cytoskeleton, microtubule organizing center, centrosome. Cytoplasm, cytoskeleton, microtubule organizing center, centrosome, centriole Cytoplasm, cytoskeleton, cilium basal body. Cytoplasm, cytoskeleton, spindle pole. Note=Component of both mother and daughter centrioles

**POC1A Antibody (N-term) - Protocols**

Provided below are standard protocols that you may find useful for product applications.

- [Western Blot](#)
- [Blocking Peptides](#)
- [Dot Blot](#)
- [Immunohistochemistry](#)
- [Immunofluorescence](#)
- [Immunoprecipitation](#)
- [Flow Cytometry](#)
- [Cell Culture](#)

**POC1A Antibody (N-term) - Images**

POC1A Antibody (N-term) (Cat. #AP18491a) western blot analysis in mouse kidney tissue lysates (35ug/lane). This demonstrates the POC1A antibody detected the POC1A protein (arrow).

**POC1A Antibody (N-term) - Background**

The function of this protein remains unknown.

**POC1A Antibody (N-term) - References**

Keller, L.C., et al. Mol. Biol. Cell 20(4):1150-1166(2009)  
Hames, R.S., et al. Exp. Cell Res. 314(3):574-589(2008)