

**OR2A5 Antibody (C-term)**  
**Affinity Purified Rabbit Polyclonal Antibody (Pab)**  
**Catalog # AP18505b**

**Specification**

---

**OR2A5 Antibody (C-term) - Product Information**

Application	WB,E
Primary Accession	<a href="#">Q96R48</a>
Other Accession	<a href="#">Q8NGT9</a> , <a href="#">Q96R47</a> , <a href="#">NP_036497.1</a>
Reactivity	Human
Host	Rabbit
Clonality	Polyclonal
Isotype	Rabbit IgG
Calculated MW	35207
Antigen Region	246-272

**OR2A5 Antibody (C-term) - Additional Information**

**Gene ID** 393046

**Other Names**

Olfactory receptor 2A5, Olfactory receptor 2A26, Olfactory receptor 2A8, Olfactory receptor 7-138/7-141, OR7-138, OR7-141, OR2A5, OR2A26, OR2A8

**Target/Specificity**

This OR2A5 antibody is generated from rabbits immunized with a KLH conjugated synthetic peptide between 246-272 amino acids from the C-terminal region of human OR2A5.

**Dilution**

WB~~1:1000

**Format**

Purified polyclonal antibody supplied in PBS with 0.09% (W/V) sodium azide. This antibody is purified through a protein A column, followed by peptide affinity purification.

**Storage**

Maintain refrigerated at 2-8°C for up to 2 weeks. For long term storage store at -20°C in small aliquots to prevent freeze-thaw cycles.

**Precautions**

OR2A5 Antibody (C-term) is for research use only and not for use in diagnostic or therapeutic procedures.

**OR2A5 Antibody (C-term) - Protein Information**

**Name** OR2A5

**Synonyms** OR2A26, OR2A8

**Function** Odorant receptor.

**Cellular Location**

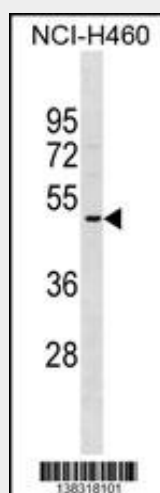
Cell membrane; Multi-pass membrane protein.

**OR2A5 Antibody (C-term) - Protocols**

Provided below are standard protocols that you may find useful for product applications.

- [Western Blot](#)
- [Blocking Peptides](#)
- [Dot Blot](#)
- [Immunohistochemistry](#)
- [Immunofluorescence](#)
- [Immunoprecipitation](#)
- [Flow Cytometry](#)
- [Cell Culture](#)

**OR2A5 Antibody (C-term) - Images**



OR2A5 Antibody (C-term) (Cat. #AP18505b) western blot analysis in NCI-H460 cell line lysates (35ug/lane). This demonstrates the OR2A5 antibody detected the OR2A5 protein (arrow).

**OR2A5 Antibody (C-term) - Background**

Olfactory receptors interact with odorant molecules in the nose, to initiate a neuronal response that triggers the perception of a smell. The olfactory receptor proteins are members of a large family of G-protein-coupled receptors (GPCR) arising from single coding-exon genes. Olfactory receptors share a 7-transmembrane domain structure with many neurotransmitter and hormone receptors and are responsible for the recognition and G protein-mediated transduction of odorant signals. The olfactory receptor gene family is the largest in the genome. The nomenclature assigned to the olfactory receptor genes and proteins for this organism is independent of other organisms.

**OR2A5 Antibody (C-term) - References**

Fuchs, T., et al. Genomics 80(3):295-302(2002)  
Rouquier, S., et al. Nat. Genet. 18(3):243-250(1998)