

CCBL1 Antibody (C-term)
Affinity Purified Rabbit Polyclonal Antibody (Pab)
Catalog # AP18519b**Specification**

CCBL1 Antibody (C-term) - Product Information

Application	WB,E
Primary Accession	Q16773
Other Accession	NP_004050.3
Reactivity	Human
Host	Rabbit
Clonality	Polyclonal
Isotype	Rabbit IgG
Calculated MW	47875
Antigen Region	327-355

CCBL1 Antibody (C-term) - Additional Information**Gene ID** 883**Other Names**

Kynurenine--oxoglutarate transaminase 1, Cysteine-S-conjugate beta-lyase, Glutamine transaminase K, GTK, Glutamine--phenylpyruvate transaminase, Kynurenine aminotransferase I, KATI, Kynurenine--oxoglutarate transaminase I, CCBL1

Target/Specificity

This CCBL1 antibody is generated from rabbits immunized with a KLH conjugated synthetic peptide between 327-355 amino acids from the C-terminal region of human CCBL1.

Dilution

WB~~1:1000

Format

Purified polyclonal antibody supplied in PBS with 0.09% (W/V) sodium azide. This antibody is purified through a protein A column, followed by peptide affinity purification.

Storage

Maintain refrigerated at 2-8°C for up to 2 weeks. For long term storage store at -20°C in small aliquots to prevent freeze-thaw cycles.

Precautions

CCBL1 Antibody (C-term) is for research use only and not for use in diagnostic or therapeutic procedures.

CCBL1 Antibody (C-term) - Protein Information**Name** KYAT1 ([HGNC:1564](#))

Synonyms CCBL1

Function Catalyzes the irreversible transamination of the L-tryptophan metabolite L-kynurenine to form kynurenic acid (KA), an intermediate in the tryptophan catabolic pathway which is also a broad spectrum antagonist of the three ionotropic excitatory amino acid receptors among others (PubMed:[19338303](#), PubMed:[28097769](#)). Also metabolizes the cysteine conjugates of certain halogenated alkenes and alkanes to form reactive metabolites (PubMed:[7883047](#)). Catalyzes the beta-elimination of S-conjugates and Se-conjugates of L-(seleno)cysteine, resulting in the cleavage of the C-S or C-Se bond (PubMed:[7883047](#)).

Cellular Location

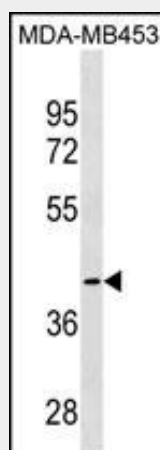
Cytoplasm, cytosol.

CCBL1 Antibody (C-term) - Protocols

Provided below are standard protocols that you may find useful for product applications.

- [Western Blot](#)
- [Blocking Peptides](#)
- [Dot Blot](#)
- [Immunohistochemistry](#)
- [Immunofluorescence](#)
- [Immunoprecipitation](#)
- [Flow Cytometry](#)
- [Cell Culture](#)

CCBL1 Antibody (C-term) - Images



CCBL1 Antibody (C-term) (Cat. #AP18519b) western blot analysis in MDA-MB453 cell line lysates (35ug/lane). This demonstrates the CCBL1 antibody detected the CCBL1 protein (arrow).

CCBL1 Antibody (C-term) - Background

This gene encodes a cytosolic enzyme that is responsible for the metabolism of cysteine conjugates of certain halogenated alkenes and alkanes. This metabolism can form reactive metabolites leading to nephrotoxicity and neurotoxicity. Increased levels of this enzyme have been linked to schizophrenia. Multiple transcript variants that encode different isoforms have been identified for this gene.

CCBL1 Antibody (C-term) - References

Han, Q., et al. J. Med. Chem. 52(9):2786-2793(2009)
Cooper, A.J., et al. Arch. Biochem. Biophys. 474(1):72-81(2008)
Lamesch, P., et al. Genomics 89(3):307-315(2007)
Kapoor, R., et al. Brain Res. 1106(1):205-210(2006)
Cooper, A.J., et al. Amino Acids 30(1):1-15(2006)