

IL22RA2 Antibody (N-term)
Affinity Purified Rabbit Polyclonal Antibody (Pab)
Catalog # AP18561A**Specification**

IL22RA2 Antibody (N-term) - Product Information

| | |
|-------------------|-----------------------------|
| Application | WB,E |
| Primary Accession | O969J5 |
| Other Accession | NP_443194.1 |
| Reactivity | Human |
| Host | Rabbit |
| Clonality | Polyclonal |
| Isotype | Rabbit IgG |
| Calculated MW | 30550 |
| Antigen Region | 15-42 |

IL22RA2 Antibody (N-term) - Additional Information**Gene ID** 116379**Other Names**

Interleukin-22 receptor subunit alpha-2, IL-22 receptor subunit alpha-2, IL-22R-alpha-2, IL-22RA2, Cytokine receptor class-II member 10, Cytokine receptor family 2 member 10, CRF2-10, Cytokine receptor family type 2, soluble 1, CRF2-S1, Interleukin-22-binding protein, IL-22BP, IL22BP, ZcytoR16, IL22RA2

Target/Specificity

This IL22RA2 antibody is generated from rabbits immunized with a KLH conjugated synthetic peptide between 15-42 amino acids from the N-terminal region of human IL22RA2.

Dilution

WB~~1:1000

Format

Purified polyclonal antibody supplied in PBS with 0.09% (W/V) sodium azide. This antibody is purified through a protein A column, followed by peptide affinity purification.

Storage

Maintain refrigerated at 2-8°C for up to 2 weeks. For long term storage store at -20°C in small aliquots to prevent freeze-thaw cycles.

Precautions

IL22RA2 Antibody (N-term) is for research use only and not for use in diagnostic or therapeutic procedures.

IL22RA2 Antibody (N-term) - Protein Information**Name** IL22RA2

Function Isoform 2 is a receptor for IL22. Binds to IL22, prevents interaction with the functional IL-22R complex and blocks the activity of IL22 (in vitro). May play an important role as an IL22 antagonist in the regulation of inflammatory responses.

Cellular Location
Secreted.

Tissue Location

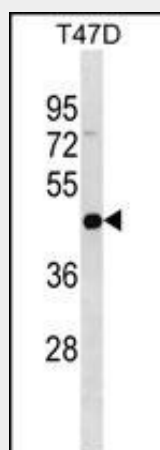
Expressed in placenta, spleen, breast, skin and lung. Also detected in intestinal tract, testis, brain, heart and thymus. No expression found in prostate, bladder, kidney, ovary, muscle, bone marrow, liver and uterus. Isoform 1 is expressed only in placenta. Isoform 2 is expressed in placenta and breast and at lower level in spleen, skin, thymus and stomach

IL22RA2 Antibody (N-term) - Protocols

Provided below are standard protocols that you may find useful for product applications.

- [Western Blot](#)
- [Blocking Peptides](#)
- [Dot Blot](#)
- [Immunohistochemistry](#)
- [Immunofluorescence](#)
- [Immunoprecipitation](#)
- [Flow Cytometry](#)
- [Cell Culture](#)

IL22RA2 Antibody (N-term) - Images



IL22RA2 Antibody (N-term) (Cat. #AP18561a) western blot analysis in T47D cell line lysates (35ug/lane). This demonstrates the IL22RA2 antibody detected the IL22RA2 protein (arrow).

IL22RA2 Antibody (N-term) - Background

The protein encoded by this gene is a soluble class II cytokine receptor. This protein has been shown to specifically bind to interleukin 22 (IL22), block the interaction of IL22 with its cell surface receptor, and thus inhibit IL22 activity. This protein functions as an IL22 antagonist, and may be important in the regulation of inflammatory response. Three alternatively spliced transcript variants encoding distinct isoforms have been described.

IL22RA2 Antibody (N-term) - References

Davila, S., et al. Genes Immun. 11(3):232-238(2010)
Kingo, K., et al. J. Dermatol. Sci. 57(1):71-73(2010)
Trynka, G., et al. Gut 58(8):1078-1083(2009)
Endam, L.M., et al. Otolaryngol Head Neck Surg 140(5):741-747(2009)
de Moura, P.R., et al. FEBS Lett. 583(7):1072-1077(2009)