

SYCP2 Antibody (C-term)
Affinity Purified Rabbit Polyclonal Antibody (Pab)
Catalog # AP18626b**Specification**

SYCP2 Antibody (C-term) - Product Information

Application	WB,E
Primary Accession	Q9BX26
Other Accession	NP_055073.2
Reactivity	Human
Host	Rabbit
Clonality	Polyclonal
Isotype	Rabbit IgG
Calculated MW	175639
Antigen Region	1345-1372

SYCP2 Antibody (C-term) - Additional Information**Gene ID** 10388**Other Names**

Synaptonemal complex protein 2, SCP-2, Synaptonemal complex lateral element protein, hsSCP2, SYCP2, SCP2

Target/Specificity

This SYCP2 antibody is generated from rabbits immunized with a KLH conjugated synthetic peptide between 1345-1372 amino acids from the C-terminal region of human SYCP2.

Dilution

WB~~1:1000

Format

Purified polyclonal antibody supplied in PBS with 0.09% (W/V) sodium azide. This antibody is purified through a protein A column, followed by peptide affinity purification.

Storage

Maintain refrigerated at 2-8°C for up to 2 weeks. For long term storage store at -20°C in small aliquots to prevent freeze-thaw cycles.

Precautions

SYCP2 Antibody (C-term) is for research use only and not for use in diagnostic or therapeutic procedures.

SYCP2 Antibody (C-term) - Protein Information**Name** SYCP2**Synonyms** SCP2

Function Major component of the axial/lateral elements of synaptonemal complexes (SCS) during meiotic prophase. Plays a role in the assembly of synaptonemal complexes. Required for normal meiotic chromosome synapsis during oocyte and spermatocyte development and for normal male and female fertility. Required for insertion of SYCP3 into synaptonemal complexes. May be involved in the organization of chromatin by temporarily binding to DNA scaffold attachment regions. Requires SYCP3, but not SYCP1, in order to be incorporated into the axial/lateral elements.

Cellular Location

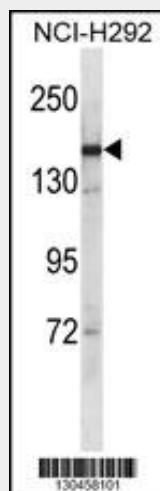
Nucleus {ECO:0000250|UniProtKB:Q9CUU3}. Chromosome {ECO:0000250|UniProtKB:Q9CUU3}. Note=In axial/lateral elements of the tripartite segments of synaptonemal complexes {ECO:0000250|UniProtKB:Q9CUU3}

SYCP2 Antibody (C-term) - Protocols

Provided below are standard protocols that you may find useful for product applications.

- [Western Blot](#)
- [Blocking Peptides](#)
- [Dot Blot](#)
- [Immunohistochemistry](#)
- [Immunofluorescence](#)
- [Immunoprecipitation](#)
- [Flow Cytometry](#)
- [Cell Culture](#)

SYCP2 Antibody (C-term) - Images



SYCP2 Antibody (C-term) (Cat. #AP18626b) western blot analysis in NCI-H292 cell line lysates (35ug/lane). This demonstrates the SYCP2 antibody detected the SYCP2 protein (arrow).

SYCP2 Antibody (C-term) - Background

The synaptonemal complex is a proteinaceous structure that links homologous chromosomes during the prophase of meiosis. The protein encoded by this gene is a major component of the synaptonemal complex and may bind DNA at scaffold attachment regions. The encoded protein requires synaptonemal complex protein 3, but not 1, for inclusion in the synaptonemal complex. [provided by RefSeq].

SYCP2 Antibody (C-term) - References

Aston, K.I., et al. Hum. Reprod. 25(6):1383-1397(2010)
Sugiyama, N., et al. Mol. Cell Proteomics 6(6):1103-1109(2007)
Deloukas, P., et al. Nature 414(6866):865-871(2001)
Schalk, J.A., et al. Mamm. Genome 10(6):642-644(1999)
Offenberg, H.H., et al. Nucleic Acids Res. 26(11):2572-2579(1998)