

MRPS10 Antibody (Center)
Affinity Purified Rabbit Polyclonal Antibody (Pab)
Catalog # AP18647c**Specification**

MRPS10 Antibody (Center) - Product Information

Application	WB,E
Primary Accession	P82664
Other Accession	Q7TQ82 , Q80ZK0 , P82670 , NP_060611.2
Reactivity	Human
Predicted	Bovine, Mouse, Rat
Host	Rabbit
Clonality	Polyclonal
Isotype	Rabbit IgG
Calculated MW	22999
Antigen Region	113-141

MRPS10 Antibody (Center) - Additional Information**Gene ID** 55173**Other Names**

28S ribosomal protein S10, mitochondrial, MRP-S10, S10mt, MRPS10

Target/Specificity

This MRPS10 antibody is generated from rabbits immunized with a KLH conjugated synthetic peptide between 113-141 amino acids from the Central region of human MRPS10.

Dilution

WB~~1:1000

Format

Purified polyclonal antibody supplied in PBS with 0.09% (W/V) sodium azide. This antibody is purified through a protein A column, followed by peptide affinity purification.

Storage

Maintain refrigerated at 2-8°C for up to 2 weeks. For long term storage store at -20°C in small aliquots to prevent freeze-thaw cycles.

Precautions

MRPS10 Antibody (Center) is for research use only and not for use in diagnostic or therapeutic procedures.

MRPS10 Antibody (Center) - Protein Information**Name** MRPS10**Cellular Location**

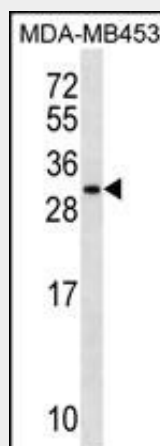
Mitochondrion.

MRPS10 Antibody (Center) - Protocols

Provided below are standard protocols that you may find useful for product applications.

- [Western Blot](#)
- [Blocking Peptides](#)
- [Dot Blot](#)
- [Immunohistochemistry](#)
- [Immunofluorescence](#)
- [Immunoprecipitation](#)
- [Flow Cytometry](#)
- [Cell Culture](#)

MRPS10 Antibody (Center) - Images



MRPS10 Antibody (Center) (Cat. #AP18647c) western blot analysis in MDA-MB453 cell line lysates (35ug/lane). This demonstrates the MRPS10 antibody detected the MRPS10 protein (arrow).

MRPS10 Antibody (Center) - Background

Mammalian mitochondrial ribosomal proteins are encoded by nuclear genes and help in protein synthesis within the mitochondrion. Mitochondrial ribosomes (mitoribosomes) consist of a small 28S subunit and a large 39S subunit. They have an estimated 75% protein to rRNA composition compared to prokaryotic ribosomes, where this ratio is reversed. Another difference between mammalian mitoribosomes and prokaryotic ribosomes is that the latter contain a 5S rRNA. Among different species, the proteins comprising the mitoribosome differ greatly in sequence, and sometimes in biochemical properties, which prevents easy recognition by sequence homology. This gene encodes a 28S subunit protein that belongs to the ribosomal protein S10P family. Pseudogenes corresponding to this gene are found on chromosomes 1q, 3p, and 9p. [provided by RefSeq].

MRPS10 Antibody (Center) - References

Lamesch, P., et al. Genomics 89(3):307-315(2007)

Mungall, A.J., et al. Nature 425(6960):805-811(2003)
Zhang, Z., et al. Genomics 81(5):468-480(2003)
Jia, L., et al. Genomics 79(1):7-17(2002)
Cavdar Koc, E., et al. J. Biol. Chem. 276(22):19363-19374(2001)