

UTP11L Antibody (C-term)
Affinity Purified Rabbit Polyclonal Antibody (Pab)
Catalog # AP18665b

Specification

UTP11L Antibody (C-term) - Product Information

Application	WB,E
Primary Accession	O9Y3A2
Other Accession	O8R5K5 , NP_057121.2
Reactivity	Human
Predicted	Rat
Host	Rabbit
Clonality	Polyclonal
Isotype	Rabbit IgG
Calculated MW	30447
Antigen Region	227-253

UTP11L Antibody (C-term) - Additional Information

Gene ID 51118

Other Names

Probable U3 small nucleolar RNA-associated protein 11, U3 snoRNA-associated protein 11, UTP11-like protein, UTP11L

Target/Specificity

This UTP11L antibody is generated from rabbits immunized with a KLH conjugated synthetic peptide between 227-253 amino acids from the C-terminal region of human UTP11L.

Dilution

WB~~1:1000

Format

Purified polyclonal antibody supplied in PBS with 0.09% (W/V) sodium azide. This antibody is purified through a protein A column, followed by peptide affinity purification.

Storage

Maintain refrigerated at 2-8°C for up to 2 weeks. For long term storage store at -20°C in small aliquots to prevent freeze-thaw cycles.

Precautions

UTP11L Antibody (C-term) is for research use only and not for use in diagnostic or therapeutic procedures.

UTP11L Antibody (C-term) - Protein Information

Name UTP11 ([HGNC:24329](#))

Function Part of the small subunit (SSU) processome, first precursor of the small eukaryotic ribosomal subunit. During the assembly of the SSU processome in the nucleolus, many ribosome biogenesis factors, an RNA chaperone and ribosomal proteins associate with the nascent pre- rRNA and work in concert to generate RNA folding, modifications, rearrangements and cleavage as well as targeted degradation of pre- ribosomal RNA by the RNA exosome. Involved in nucleolar processing of pre-18S ribosomal RNA.

Cellular Location

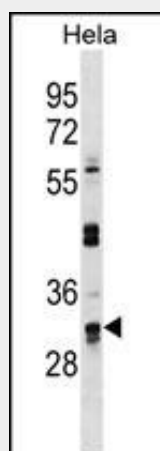
Nucleus, nucleolus.

UTP11L Antibody (C-term) - Protocols

Provided below are standard protocols that you may find useful for product applications.

- [Western Blot](#)
- [Blocking Peptides](#)
- [Dot Blot](#)
- [Immunohistochemistry](#)
- [Immunofluorescence](#)
- [Immunoprecipitation](#)
- [Flow Cytometry](#)
- [Cell Culture](#)

UTP11L Antibody (C-term) - Images



UTP11L Antibody (C-term) (Cat. #AP18665b) western blot analysis in HeLa cell line lysates (35ug/lane). This demonstrates the UTP11L antibody detected the UTP11L protein (arrow).

UTP11L Antibody (C-term) - Background

UTP11L is involved in nucleolar processing of pre-18S ribosomal RNA (By similarity).

UTP11L Antibody (C-term) - References

- Olsen, J.V., et al. Cell 127(3):635-648(2006)
Andersen, J.S., et al. Nature 433(7021):77-83(2005)
Heese, K., et al. Neuroscience 116(2):321-324(2003)
Andersen, J.S., et al. Curr. Biol. 12(1):1-11(2002)
Heese, K., et al. Eur. J. Neurosci. 15(1):79-86(2002)