

**Mouse Dcdc2 Antibody (C-term)**  
**Affinity Purified Rabbit Polyclonal Antibody (Pab)**  
**Catalog # AP18686b**

**Specification**

---

**Mouse Dcdc2 Antibody (C-term) - Product Information**

Application	WB,E
Primary Accession	<a href="#">Q5DU00</a>
Other Accession	<a href="#">NP_808245.2</a>
Reactivity	Mouse
Host	Rabbit
Clonality	Polyclonal
Isotype	Rabbit IgG
Calculated MW	51953
Antigen Region	373-400

**Mouse Dcdc2 Antibody (C-term) - Additional Information**

**Gene ID** 195208

**Other Names**

Doublecortin domain-containing protein 2, Dcdc2, Dcdc2a, Kiaa1154

**Target/Specificity**

This Mouse Dcdc2 antibody is generated from rabbits immunized with a KLH conjugated synthetic peptide between 373-400 amino acids from the C-terminal region of mouse Dcdc2.

**Dilution**

WB~~1:1000

**Format**

Purified polyclonal antibody supplied in PBS with 0.09% (W/V) sodium azide. This antibody is purified through a protein A column, followed by peptide affinity purification.

**Storage**

Maintain refrigerated at 2-8°C for up to 2 weeks. For long term storage store at -20°C in small aliquots to prevent freeze-thaw cycles.

**Precautions**

Mouse Dcdc2 Antibody (C-term) is for research use only and not for use in diagnostic or therapeutic procedures.

**Mouse Dcdc2 Antibody (C-term) - Protein Information**

**Name** Dcdc2

**Synonyms** Dcdc2a, Kiaa1154

**Function** Protein that plays a role in the inhibition of canonical Wnt signaling pathway (By similarity). May be involved in neuronal migration during development of the cerebral neocortex (By similarity). Involved in the control of ciliogenesis and ciliary length (By similarity).

#### Cellular Location

Cell projection, cilium {ECO:0000250|UniProtKB:Q9UHG0}. Cytoplasm, cytoskeleton, cilium axoneme {ECO:0000250|UniProtKB:Q9UHG0}. Cell projection, kinocilium {ECO:0000250|UniProtKB:D3ZR10}. Cytoplasm, cytoskeleton {ECO:0000250|UniProtKB:D3ZR10}. Note=Localizes to the ciliary axoneme and to mitotic spindle fibers in a cell-cycle-dependent manner {ECO:0000250|UniProtKB:Q9UHG0}

#### Tissue Location

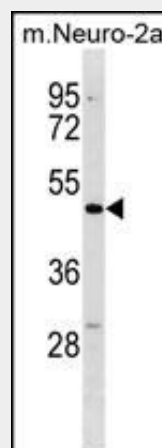
Expressed in hair cells of the inner ear.

### Mouse Dcdc2 Antibody (C-term) - Protocols

Provided below are standard protocols that you may find useful for product applications.

- [Western Blot](#)
- [Blocking Peptides](#)
- [Dot Blot](#)
- [Immunohistochemistry](#)
- [Immunofluorescence](#)
- [Immunoprecipitation](#)
- [Flow Cytometry](#)
- [Cell Culture](#)

### Mouse Dcdc2 Antibody (C-term) - Images



Mouse Dcdc2 Antibody (C-term) (Cat. #AP18686b) western blot analysis in mouse Neuro-2a cell line lysates (35ug/lane). This demonstrates the Mouse Dcdc2 antibody detected the Mouse Dcdc2 protein (arrow).

### Mouse Dcdc2 Antibody (C-term) - Background

This gene encodes a member of the doublecortin family. The protein encoded by this gene contains two doublecortin domains. The doublecortin domain has been demonstrated to bind tubulin and enhance microtubule polymerization. Alternatively spliced transcript variants encoding distinct isoforms have been found for

this gene.

#### **Mouse Dcdc2 Antibody (C-term) - References**

Dijkmans, T.F., et al. Cent Nerv Syst Agents Med Chem 10(1):32-46(2010)  
Coquelle, F.M., et al. Cell Cycle 5(9):976-983(2006)  
Reiner, O., et al. BMC Genomics 7, 188 (2006) :