

Mouse Parva Antibody (N-term)
Affinity Purified Rabbit Polyclonal Antibody (Pab)
Catalog # AP18689a**Specification**

Mouse Parva Antibody (N-term) - Product Information

Application	WB,E
Primary Accession	O9EPC1
Other Accession	O9HB97 , NP_065631.3
Reactivity	Mouse
Predicted	Rat
Host	Rabbit
Clonality	Polyclonal
Isotype	Rabbit IgG
Calculated MW	42330
Antigen Region	66-93

Mouse Parva Antibody (N-term) - Additional Information**Gene ID** 57342**Other Names**

Alpha-parvin, Actopaxin, Parva, Actp

Target/Specificity

This Mouse Parva antibody is generated from rabbits immunized with a KLH conjugated synthetic peptide between 66-93 amino acids from the N-terminal region of mouse Parva.

Dilution

WB~~1:1000

Format

Purified polyclonal antibody supplied in PBS with 0.09% (W/V) sodium azide. This antibody is purified through a protein A column, followed by peptide affinity purification.

Storage

Maintain refrigerated at 2-8°C for up to 2 weeks. For long term storage store at -20°C in small aliquots to prevent freeze-thaw cycles.

Precautions

Mouse Parva Antibody (N-term) is for research use only and not for use in diagnostic or therapeutic procedures.

Mouse Parva Antibody (N-term) - Protein Information**Name** Parva**Synonyms** Actp

Function Plays a role in sarcomere organization and in smooth muscle cell contraction. Required for normal development of the embryonic cardiovascular system, and for normal septation of the heart outflow tract. Plays a role in sprouting angiogenesis and is required for normal adhesion of vascular smooth muscle cells to endothelial cells during blood vessel development. Plays a role in the reorganization of the actin cytoskeleton, formation of lamellipodia and ciliogenesis. Plays a role in the establishment of cell polarity, cell adhesion, cell spreading, and directed cell migration.

Cellular Location

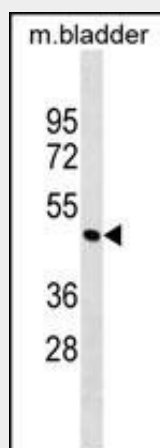
Cell junction, focal adhesion. Cell membrane; Peripheral membrane protein; Cytoplasmic side. Cytoplasm, cytoskeleton Cytoplasm, myofibril, sarcomere, Z line. Note=Constituent of focal adhesions

Mouse Parva Antibody (N-term) - Protocols

Provided below are standard protocols that you may find useful for product applications.

- [Western Blot](#)
- [Blocking Peptides](#)
- [Dot Blot](#)
- [Immunohistochemistry](#)
- [Immunofluorescence](#)
- [Immunoprecipitation](#)
- [Flow Cytometry](#)
- [Cell Culture](#)

Mouse Parva Antibody (N-term) - Images



Mouse Parva Antibody (N-term) (Cat. #AP18689a) western blot analysis in mouse bladder tissue lysates (35ug/lane). This demonstrates the Parva antibody detected the Parva protein (arrow).

Mouse Parva Antibody (N-term) - Background

Parva probably plays a role in the regulation of cell adhesion and cytoskeleton organization.

Mouse Parva Antibody (N-term) - References

- Montanez, E., et al. EMBO J. 28(20):3132-3144(2009)
Lange, A., et al. Nature 461(7266):1002-1006(2009)
Stanchi, F., et al. J. Cell. Sci. 122 (PT 11), 1800-1811 (2009) :
Pereira, J.A., et al. J. Cell Biol. 185(1):147-161(2009)

Falco, G., et al. *Reprod. Biomed. Online* 13(3):394-403(2006)