

mouse CASP3 Antibody (N-term S12)
Affinity Purified Rabbit Polyclonal Antibody (Pab)
Catalog # AP18708a**Specification**

mouse CASP3 Antibody (N-term S12) - Product Information

Application	WB,E
Primary Accession	P70677
Other Accession	NP_033940.1
Reactivity	Mouse
Host	Rabbit
Clonality	Polyclonal
Isotype	Rabbit IgG
Calculated MW	31475
Antigen Region	1-30

mouse CASP3 Antibody (N-term S12) - Additional Information**Gene ID** 12367**Other Names**

Caspase-3, CASP-3, Apopain, Cysteine protease CPP32, CPP-32, LICE, Protein Yama, SREBP cleavage activity 1, SCA-1, Caspase-3 subunit p17, Caspase-3 subunit p12, Casp3, Cpp32

Target/Specificity

This mouse CASP3 antibody is generated from rabbits immunized with a KLH conjugated synthetic peptide between 1-30 amino acids from the N-terminal region of mouse CASP3.

Dilution

WB~~1:1000

Format

Purified polyclonal antibody supplied in PBS with 0.09% (W/V) sodium azide. This antibody is purified through a protein A column, followed by peptide affinity purification.

Storage

Maintain refrigerated at 2-8°C for up to 2 weeks. For long term storage store at -20°C in small aliquots to prevent freeze-thaw cycles.

Precautions

mouse CASP3 Antibody (N-term S12) is for research use only and not for use in diagnostic or therapeutic procedures.

mouse CASP3 Antibody (N-term S12) - Protein Information**Name** Casp3**Synonyms** Cpp32 {ECO:0000303|PubMed:8934524}

Function Thiol protease that acts as a major effector caspase involved in the execution phase of apoptosis (PubMed:[8934524](#), PubMed:[16469926](#)). Following cleavage and activation by initiator caspases (CASP8, CASP9 and/or CASP10), mediates execution of apoptosis by catalyzing cleavage of many proteins (PubMed:[8934524](#), PubMed:[16469926](#)). At the onset of apoptosis, it proteolytically cleaves poly(ADP-ribose) polymerase PARP1 at a '216-Asp-|-Gly-217' bond. Cleaves and activates sterol regulatory element binding proteins (SREBPs) between the basic helix-loop-helix leucine zipper domain and the membrane attachment domain. Cleaves and activates caspase-6, -7 and -9 (CASP6, CASP7 and CASP9, respectively). Cleaves and inactivates interleukin-18 (IL18) (By similarity). Triggers cell adhesion in sympathetic neurons through RET cleavage (By similarity). Cleaves IL-1 beta between an Asp and an Ala, releasing the mature cytokine which is involved in a variety of inflammatory processes (By similarity). Cleaves and inhibits serine/threonine- protein kinase AKT1 in response to oxidative stress (PubMed:[12124386](#)). Acts as an inhibitor of type I interferon production during virus- induced apoptosis by mediating cleavage of antiviral proteins CGAS, IRF3 and MAVS, thereby preventing cytokine overproduction (PubMed:[30878284](#)). Also involved in pyroptosis by mediating cleavage and activation of gasdermin-E (GSDME) (By similarity). Cleaves XRCC4 and phospholipid scramblase proteins XKR4, XKR8 and XKR9, leading to promote phosphatidylserine exposure on apoptotic cell surface (PubMed:[25231987](#), PubMed:[33725486](#)).

Cellular Location

Cytoplasm {ECO:0000250|UniProtKB:P42574}.

Tissue Location

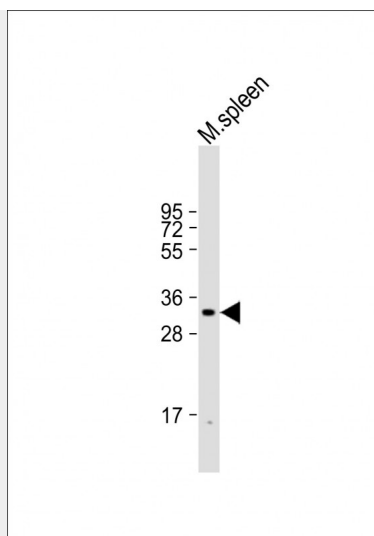
Highest expression in spleen, lung, liver, kidney and heart (PubMed:9038361). Lower expression in brain, skeletal muscle and testis (PubMed:9038361).

mouse CASP3 Antibody (N-term S12) - Protocols

Provided below are standard protocols that you may find useful for product applications.

- [Western Blot](#)
- [Blocking Peptides](#)
- [Dot Blot](#)
- [Immunohistochemistry](#)
- [Immunofluorescence](#)
- [Immunoprecipitation](#)
- [Flow Cytometry](#)
- [Cell Culture](#)

mouse CASP3 Antibody (N-term S12) - Images



Anti-CASP3 Antibody at 1:1000 dilution + mouse spleen lysate Lysates/proteins at 20 µg per lane. Secondary Goat Anti-Rabbit IgG, (H+L), Peroxidase conjugated at 1/10000 dilution. Predicted band size : 31 kDa Blocking/Dilution buffer: 5% NFDM/TBST.

mouse CASP3 Antibody (N-term S12) - Background

CASP3 is involved in the activation cascade of caspases responsible for apoptosis execution. At the onset of apoptosis it proteolytically cleaves poly(ADP-ribose) polymerase (PARP) at a '216-Asp-|-Gly-217' bond. Cleaves and activates sterol regulatory element binding proteins (SREBPs) between the basic helix-loop-helix leucine zipper domain and the membrane attachment domain. Cleaves and activates caspase-6, -7 and -9 (By similarity). Cleaves IL-1 beta between an Asp and an Ala, releasing the mature cytokine which is involved in a variety of inflammatory processes.

mouse CASP3 Antibody (N-term S12) - References

Srikanth, C.V., et al. Science 330(6002):390-393(2010)
Li, F., et al. Cell Stem Cell 7(4):508-520(2010)
Wang, L., et al. J. Neurosci. 30(39):13201-13210(2010)
Gascon, E., et al. J. Neurosci. 30(37):12414-12423(2010)
Bohsali, A., et al. BMC Microbiol. 10, 237 (2010) :