

**NLRP4 Antibody (N-term)**  
**Affinity Purified Rabbit Polyclonal Antibody (Pab)**  
**Catalog # AP18739a**

**Specification**

---

**NLRP4 Antibody (N-term) - Product Information**

Application	WB,E
Primary Accession	<a href="#">O96MN2</a>
Other Accession	<a href="#">NP_604393.2</a>
Reactivity	Human
Host	Rabbit
Clonality	Polyclonal
Isotype	Rabbit IgG
Antigen Region	121-149

**NLRP4 Antibody (N-term) - Additional Information**

**Gene ID** 147945

**Other Names**

NACHT, LRR and PYD domains-containing protein 4, Cancer/testis antigen 58, CT58, PAAD and NACHT-containing protein 2, PAN2, PYRIN and NACHT-containing protein 2, PYRIN-containing APAF1-like protein 4, PYPAF4, Ribonuclease inhibitor 2, NLRP4, NALP4, PAN2, PYPAF4, RNH2

**Target/Specificity**

This NLRP4 antibody is generated from rabbits immunized with a KLH conjugated synthetic peptide between 121-149 amino acids from the N-terminal region of human NLRP4.

**Dilution**

WB~~1:1000

**Format**

Purified polyclonal antibody supplied in PBS with 0.09% (W/V) sodium azide. This antibody is purified through a protein A column, followed by peptide affinity purification.

**Storage**

Maintain refrigerated at 2-8°C for up to 2 weeks. For long term storage store at -20°C in small aliquots to prevent freeze-thaw cycles.

**Precautions**

NLRP4 Antibody (N-term) is for research use only and not for use in diagnostic or therapeutic procedures.

**NLRP4 Antibody (N-term) - Protein Information**

**Name** NLRP4 ([HGNC:22943](#))

**Function** May be involved in inflammation and recognition of cytosolic pathogen-associated

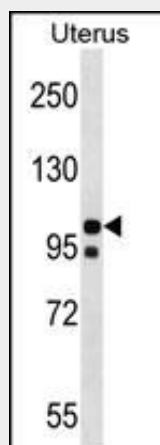
molecular patterns (PAMPs) not intercepted by membrane-bound receptors. Acts as a negative regulator of the type I interferon signaling pathway by serving as an adapter to promote DTX4-mediated ubiquitination of activated TBK1, and its subsequent degradation. Suppresses NF-kappaB induction by the cytokines TNFA and IL1B, suggesting that it operates at a point of convergence in these two cytokine signaling pathways.

### NLRP4 Antibody (N-term) - Protocols

Provided below are standard protocols that you may find useful for product applications.

- [Western Blot](#)
- [Blocking Peptides](#)
- [Dot Blot](#)
- [Immunohistochemistry](#)
- [Immunofluorescence](#)
- [Immunoprecipitation](#)
- [Flow Cytometry](#)
- [Cell Culture](#)

### NLRP4 Antibody (N-term) - Images



NLRP4 Antibody (N-term)(Cat. #AP18739a) western blot analysis in Uterus tissue lysates (35ug/lane). This demonstrates the NLRP4 antibody detected the NLRP4 protein (arrow).

### NLRP4 Antibody (N-term) - Background

NALPs are cytoplasmic proteins that form a subfamily within the larger CATERPILLER protein family. Most short NALPs, such as NALP4, have an N-terminal pyrin (MEFV; MIM 608107) domain (PYD), followed by a NACHT domain, a NACHT-associated domain (NAD), and a C-terminal leucine-rich repeat (LRR) region. The long NALP, NALP1 (MIM 606636), also has a C-terminal extension containing a function to find domain (FIIND) and a caspase recruitment domain (CARD). NALPs are implicated in the activation of proinflammatory caspases (e.g., CASP1; MIM 147678) via their involvement in multiprotein complexes called inflammasomes (Tschopp et al., 2003 [PubMed 12563287]).

### NLRP4 Antibody (N-term) - References

Cummings, J.R., et al. Tissue Antigens 76(1):48-56(2010) Enjuanes, A., et al. Cancer Res. 68(24):10178-10186(2008) Damiano, J.S., et al. Biochem. J. 381 (PT 1), 213-219 (2004) : Tschopp, J., et al. Nat. Rev. Mol. Cell Biol. 4(2):95-104(2003) Grenier, J.M., et al. FEBS Lett. 530 (1-3), 73-78

(2002) :