

RPA4 Antibody (C-term)
Affinity Purified Rabbit Polyclonal Antibody (Pab)
Catalog # AP18746b

Specification

RPA4 Antibody (C-term) - Product Information

Application	WB,E
Primary Accession	O13156
Other Accession	NP_037479.1
Reactivity	Human
Host	Rabbit
Clonality	Polyclonal
Isotype	Rabbit IgG
Calculated MW	28868
Antigen Region	234-261

RPA4 Antibody (C-term) - Additional Information

Gene ID 29935

Other Names

Replication protein A 30 kDa subunit, RP-A p30, Replication factor A protein 4, RF-A protein 4, RPA4

Target/Specificity

This RPA4 antibody is generated from rabbits immunized with a KLH conjugated synthetic peptide between 234-261 amino acids from the C-terminal region of human RPA4.

Dilution

WB~~1:1000

Format

Purified polyclonal antibody supplied in PBS with 0.09% (W/V) sodium azide. This antibody is purified through a protein A column, followed by peptide affinity purification.

Storage

Maintain refrigerated at 2-8°C for up to 2 weeks. For long term storage store at -20°C in small aliquots to prevent freeze-thaw cycles.

Precautions

RPA4 Antibody (C-term) is for research use only and not for use in diagnostic or therapeutic procedures.

RPA4 Antibody (C-term) - Protein Information

Name RPA4

Function As part of the alternative replication protein A complex, aRPA, binds single-stranded

DNA and probably plays a role in DNA repair. Compared to the RPA2-containing, canonical RPA complex, may not support chromosomal DNA replication and cell cycle progression through S-phase. The aRPA may not promote efficient priming by DNA polymerase alpha but could support DNA polymerase delta synthesis in the presence of PCNA and replication factor C (RFC), the dual incision/excision reaction of nucleotide excision repair and RAD51-dependent strand exchange.

Cellular Location

Nucleus. Note=Localizes to DNA repair foci after DNA damage

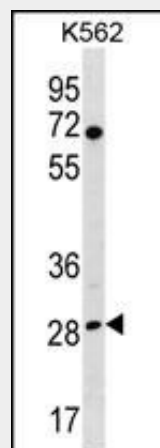
Tissue Location

Preferentially expressed in placental and colon mucosa. Widely expressed at intermediate or lower levels

RPA4 Antibody (C-term) - Protocols

Provided below are standard protocols that you may find useful for product applications.

- [Western Blot](#)
- [Blocking Peptides](#)
- [Dot Blot](#)
- [Immunohistochemistry](#)
- [Immunofluorescence](#)
- [Immunoprecipitation](#)
- [Flow Cytometry](#)
- [Cell Culture](#)

RPA4 Antibody (C-term) - Images

RPA4 Antibody (C-term)(Cat. #AP18746b) western blot analysis in K562 cell line lysates (35ug/lane). This demonstrates the RPA4 antibody detected the RPA4 protein (arrow).

RPA4 Antibody (C-term) - Background

This gene encodes a single-stranded DNA-binding protein that is the 30-kDa subunit of the replication protein A complex. Replication protein A is an essential factor for DNA double-strand break repair and cell cycle checkpoint activation. The encoded protein localizes to DNA repair foci and may be involved in the cellular DNA damage response. This protein may also play a role in inhibiting viral replication.

RPA4 Antibody (C-term) - References

Kemp, M.G., et al. J. Biol. Chem. 285(7):4788-4797(2010)
Guey, L.T., et al. Eur. Urol. 57(2):283-292(2010)
Haring, S.J., et al. Nucleic Acids Res. 38(3):846-858(2010)
Shen, M., et al. Environ. Mol. Mutagen. 50(4):285-290(2009)
Mason, A.C., et al. J. Biol. Chem. 284(8):5324-5331(2009)