

CLCA3P Antibody (Center)
Affinity Purified Rabbit Polyclonal Antibody (Pab)
Catalog # AP18773c**Specification**

CLCA3P Antibody (Center) - Product Information

Application	WB,E
Primary Accession	O9Y6N3
Reactivity	Human
Host	Rabbit
Clonality	Polyclonal
Isotype	Rabbit IgG
Calculated MW	29971
Antigen Region	70-98

CLCA3P Antibody (Center) - Additional Information**Other Names**

Calcium-activated chloride channel regulator family member 3, Calcium-activated chloride channel family member 3, hCLCA3, CLCA3P, CLCA3

Target/Specificity

This CLCA3P antibody is generated from rabbits immunized with a KLH conjugated synthetic peptide between 70-98 amino acids from the Central region of human CLCA3P.

Dilution

WB~~1:1000

Format

Purified polyclonal antibody supplied in PBS with 0.09% (W/V) sodium azide. This antibody is purified through a protein A column, followed by peptide affinity purification.

Storage

Maintain refrigerated at 2-8°C for up to 2 weeks. For long term storage store at -20°C in small aliquots to prevent freeze-thaw cycles.

Precautions

CLCA3P Antibody (Center) is for research use only and not for use in diagnostic or therapeutic procedures.

CLCA3P Antibody (Center) - Protein Information

Name CLCA3P

Synonyms CLCA3

Cellular Location

Secreted.

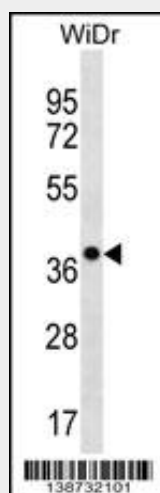
Tissue Location

Expressed in the lung, trachea, spleen, thymus and mammary gland.

CLCA3P Antibody (Center) - Protocols

Provided below are standard protocols that you may find useful for product applications.

- [Western Blot](#)
- [Blocking Peptides](#)
- [Dot Blot](#)
- [Immunohistochemistry](#)
- [Immunofluorescence](#)
- [Immunoprecipitation](#)
- [Flow Cytometry](#)
- [Cell Culture](#)

CLCA3P Antibody (Center) - Images

CLCA3P Antibody (Center)(Cat. #AP18773c) western blot analysis in WiDr cell line lysates (35ug/lane). This demonstrates the CLCA3P antibody detected the CLCA3P protein (arrow).

CLCA3P Antibody (Center) - Background

mCLCA3 (alias gob-5) is the third murine member of the family of calcium-activated chloride channels (CLCA-family). mCLCA3 plays a role in diseases with secretory dysfunctions, including asthma and cystic fibrosis. The mCLCA3 protein is located in mucin granule membranes of goblet cells of the intestinal, respiratory and reproductive tracts. It is also secreted into the mucin layer on mucosal membranes. The protein appears to be involved in the synthesis, condensation or secretion of mucins.