

**CUX1 Antibody (C-term)**  
**Affinity Purified Rabbit Polyclonal Antibody (Pab)**  
**Catalog # AP18776B**

**Specification**

---

**CUX1 Antibody (C-term) - Product Information**

Application	WB,E
Primary Accession	<a href="#">Q13948</a>
Other Accession	<a href="#">P70403</a> , <a href="#">NP_001904.2</a>
Reactivity	Human
Predicted	Mouse
Host	Rabbit
Clonality	Polyclonal
Isotype	Rabbit IgG
Calculated MW	77455
Antigen Region	640-666

**CUX1 Antibody (C-term) - Additional Information**

**Gene ID** 1523

**Other Names**

Protein CASP, CUX1, CUTL1

**Target/Specificity**

This CUX1 antibody is generated from rabbits immunized with a KLH conjugated synthetic peptide between 640-666 amino acids from the C-terminal region of human CUX1.

**Dilution**

WB~~1:1000

**Format**

Purified polyclonal antibody supplied in PBS with 0.09% (W/V) sodium azide. This antibody is purified through a protein A column, followed by peptide affinity purification.

**Storage**

Maintain refrigerated at 2-8°C for up to 2 weeks. For long term storage store at -20°C in small aliquots to prevent freeze-thaw cycles.

**Precautions**

CUX1 Antibody (C-term) is for research use only and not for use in diagnostic or therapeutic procedures.

**CUX1 Antibody (C-term) - Protein Information**

**Name** CUX1

**Synonyms** CUTL1

**Function** May be involved in intra-Golgi retrograde transport.

**Cellular Location**

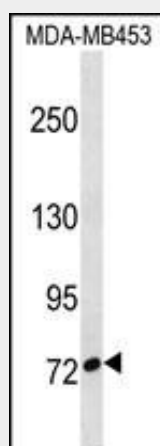
Golgi apparatus membrane; Single-pass type IV membrane protein

**CUX1 Antibody (C-term) - Protocols**

Provided below are standard protocols that you may find useful for product applications.

- [Western Blot](#)
- [Blocking Peptides](#)
- [Dot Blot](#)
- [Immunohistochemistry](#)
- [Immunofluorescence](#)
- [Immunoprecipitation](#)
- [Flow Cytometry](#)
- [Cell Culture](#)

**CUX1 Antibody (C-term) - Images**



CUX1 Antibody (C-term)(Cat. #AP18776b) western blot analysis in MDA-MB453 cell line lysates (35ug/lane). This demonstrates the CUX1 antibody detected the CUX1 protein (arrow).

**CUX1 Antibody (C-term) - Background**

The protein encoded by this gene is a member of the homeodomain family of DNA binding proteins. It may regulate gene expression, morphogenesis, and differentiation and it may also play a role in the cell cycle progression. Several alternatively spliced transcript variants of this gene have been described, but the full-length nature of some of these variants has not been determined.

**CUX1 Antibody (C-term) - References**

Xu, H., et al. Hepatology 52(4):1431-1442(2010)  
Ripka, S., et al. Neoplasia 12(8):659-667(2010)  
Ripka, S., et al. Gut 59(8):1101-1110(2010)  
Rose, J.E., et al. Mol. Med. 16 (7-8), 247-253 (2010) :  
Davila, S., et al. Genes Immun. 11(3):232-238(2010)