

**ELFN1 Antibody (C-term)**  
**Affinity Purified Rabbit Polyclonal Antibody (Pab)**  
**Catalog # AP18783b****Specification**

---

**ELFN1 Antibody (C-term) - Product Information**

Application	WB,E
Primary Accession	<a href="#">P0C7U0</a>
Other Accession	<a href="#">Q68FM6</a> , <a href="#">Q5R3F8</a> , <a href="#">Q8C8T7</a>
Reactivity	Human
Predicted	Mouse
Host	Rabbit
Clonality	Polyclonal
Isotype	Rabbit IgG
Calculated MW	90477
Antigen Region	766-792

**ELFN1 Antibody (C-term) - Additional Information****Gene ID** 392617**Other Names**

Protein ELFN1, Extracellular leucine-rich repeat and fibronectin type-III domain-containing protein 1, Protein phosphatase 1 regulatory subunit 28, ELFN1, PPP1R28

**Target/Specificity**

This ELFN1 antibody is generated from rabbits immunized with a KLH conjugated synthetic peptide between 766-792 amino acids from the C-terminal region of human ELFN1.

**Dilution**

WB~~1:1000

**Format**

Purified polyclonal antibody supplied in PBS with 0.09% (W/V) sodium azide. This antibody is purified through a protein A column, followed by peptide affinity purification.

**Storage**

Maintain refrigerated at 2-8°C for up to 2 weeks. For long term storage store at -20°C in small aliquots to prevent freeze-thaw cycles.

**Precautions**

ELFN1 Antibody (C-term) is for research use only and not for use in diagnostic or therapeutic procedures.

**ELFN1 Antibody (C-term) - Protein Information****Name** ELFN1

**Synonyms** PPP1R28

**Function** Postsynaptic protein that regulates circuit dynamics in the central nervous system by modulating the temporal dynamics of interneuron recruitment. Specifically present in excitatory synapses onto oriens-lacunosum molecular (OLM) interneurons and acts as a regulator of presynaptic release probability to direct the formation of highly facilitating pyramidal-OLM synapses (By similarity). Inhibits phosphatase activity of protein phosphatase 1 (PP1) complexes.

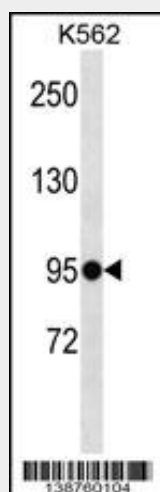
**Cellular Location**

Membrane; Single-pass type I membrane protein. Cell projection, dendrite. Note=Localizes to excitatory synapses onto somatostatin (Sst)-containing oriens-lacunosum molecular (O-LM) interneurons

**ELFN1 Antibody (C-term) - Protocols**

Provided below are standard protocols that you may find useful for product applications.

- [Western Blot](#)
- [Blocking Peptides](#)
- [Dot Blot](#)
- [Immunohistochemistry](#)
- [Immunofluorescence](#)
- [Immunoprecipitation](#)
- [Flow Cytometry](#)
- [Cell Culture](#)

**ELFN1 Antibody (C-term) - Images**

ELFN1 Antibody (C-term)(Cat. #AP18783b) western blot analysis in K562 cell line lysates (35ug/lane). This demonstrates the ELFN1 antibody detected the ELFN1 protein (arrow).

**ELFN1 Antibody (C-term) - Background**

The function of this protein remains unknown.