

**IFI44L Antibody (C-term)**  
**Affinity Purified Rabbit Polyclonal Antibody (Pab)**  
**Catalog # AP18801b****Specification**

---

**IFI44L Antibody (C-term) - Product Information**

Application	WB,E
Primary Accession	<a href="#">Q53G44</a>
Other Accession	<a href="#">NP_006811.2</a>
Reactivity	Human
Host	Rabbit
Clonality	Polyclonal
Isotype	Rabbit IgG
Antigen Region	151-180

**IFI44L Antibody (C-term) - Additional Information****Gene ID** 10964**Other Names**

Interferon-induced protein 44-like, IFI44L, C1orf29

**Target/Specificity**

This IFI44L antibody is generated from rabbits immunized with a KLH conjugated synthetic peptide between 151-180 amino acids from the C-terminal region of human IFI44L.

**Dilution**

WB~~1:2000

**Format**

Purified polyclonal antibody supplied in PBS with 0.09% (W/V) sodium azide. This antibody is purified through a protein A column, followed by peptide affinity purification.

**Storage**

Maintain refrigerated at 2-8°C for up to 2 weeks. For long term storage store at -20°C in small aliquots to prevent freeze-thaw cycles.

**Precautions**

IFI44L Antibody (C-term) is for research use only and not for use in diagnostic or therapeutic procedures.

**IFI44L Antibody (C-term) - Protein Information****Name** IFI44L**Synonyms** C1orf29**Function** Type I interferon-stimulated gene (ISG) that plays a critical role in antiviral and

antibacterial activity (PubMed:[34722780](#)). During bacterial infection, promotes macrophage differentiation and facilitates inflammatory cytokine secretion (PubMed:[34722780](#)). Plays a role in the control of respiratory syncytial virus/RSV infection, reducing the ability of the virus to replicate (PubMed:[32611756](#)). Exhibits a low antiviral activity against hepatitis C virus (PubMed:[21478870](#)). Acts also as a feedback regulator of IFN responses by negatively regulating IKKBK and IKBE kinase activities through interaction with FKBP5 (PubMed:[31434731](#)).

#### Cellular Location

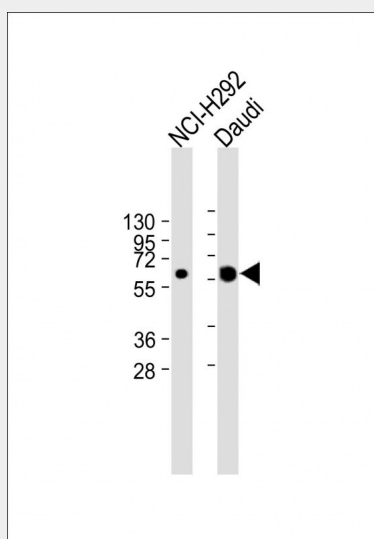
Cytoplasm.

#### IFI44L Antibody (C-term) - Protocols

Provided below are standard protocols that you may find useful for product applications.

- [Western Blot](#)
- [Blocking Peptides](#)
- [Dot Blot](#)
- [Immunohistochemistry](#)
- [Immunofluorescence](#)
- [Immunoprecipitation](#)
- [Flow Cytometry](#)
- [Cell Culture](#)

#### IFI44L Antibody (C-term) - Images



All lanes : Anti-IFI44L Antibody (C-term) at 1:2000 dilution Lane 1: NCI-H292 whole cell lysate Lane 2: Daudi whole cell lysate Lysates/proteins at 20 µg per lane. Secondary Goat Anti-Rabbit IgG, (H+L), Peroxidase conjugated at 1/10000 dilution. Predicted band size : 51 kDa Blocking/Dilution buffer: 5% NFDM/TBST.

#### IFI44L Antibody (C-term) - Background

The function of this protein remains unknown.

#### IFI44L Antibody (C-term) - References

Davila, S., et al. Genes Immun. 11(3):232-238(2010)