

**SCRIB Antibody (N-term)**  
**Affinity Purified Rabbit Polyclonal Antibody (Pab)**  
**Catalog # AP18837a****Specification**

---

**SCRIB Antibody (N-term) - Product Information**

Application	WB,E
Primary Accession	<a href="#">Q14160</a>
Other Accession	<a href="#">NP_874365.2</a>
Reactivity	Human
Host	Rabbit
Clonality	Polyclonal
Isotype	Rabbit IgG
Calculated MW	174915
Antigen Region	382-410

**SCRIB Antibody (N-term) - Additional Information****Gene ID** 23513**Other Names**

Protein scribble homolog, Scribble, hScrib, Protein LAP4, SCRIB, CRIB1, KIAA0147, LAP4, SCRIB1, VARTUL

**Target/Specificity**

This SCRIB antibody is generated from rabbits immunized with a KLH conjugated synthetic peptide between 382-410 amino acids from the N-terminal region of human SCRIB.

**Dilution**

WB~~1:1000

**Format**

Purified polyclonal antibody supplied in PBS with 0.09% (W/V) sodium azide. This antibody is purified through a protein A column, followed by peptide affinity purification.

**Storage**

Maintain refrigerated at 2-8°C for up to 2 weeks. For long term storage store at -20°C in small aliquots to prevent freeze-thaw cycles.

**Precautions**

SCRIB Antibody (N-term) is for research use only and not for use in diagnostic or therapeutic procedures.

**SCRIB Antibody (N-term) - Protein Information****Name** SCRIB**Synonyms** CRIB1, KIAA0147, LAP4, SCRIB1, VARTUL

**Function** Scaffold protein involved in different aspects of polarized cell differentiation regulating epithelial and neuronal morphogenesis and T-cell polarization (PubMed:[15182672](#), PubMed:[16344308](#), PubMed:[19041750](#), PubMed:[18716323](#), PubMed:[18641685](#), PubMed:[16965391](#), PubMed:[27380321](#)). Via its interaction with CRTAM, required for the late phase polarization of a subset of CD4+ T-cells, which in turn regulates TCR-mediated proliferation and IFNG and IL22 production (By similarity). Most probably functions in the establishment of apico-basal cell polarity (PubMed:[16344308](#), PubMed:[19041750](#)). May function in cell proliferation regulating progression from G1 to S phase and as a positive regulator of apoptosis for instance during acinar morphogenesis of the mammary epithelium (PubMed:[16965391](#), PubMed:[19041750](#)). May also function in cell migration and adhesion and hence regulate cell invasion through MAPK signaling (PubMed:[18716323](#), PubMed:[18641685](#)). May play a role in exocytosis and in the targeting of synaptic vesicles to synapses (PubMed:[15182672](#)). Functions as an activator of Rac GTPase activity.

#### **Cellular Location**

Cell membrane; Peripheral membrane protein. Cell junction. Cell junction, adherens junction. Cell projection, lamellipodium. Cytoplasm. Postsynapse. Presynapse. Note=Targeting to cell-cell junctions which is CDH1-dependent is required for the pro-apoptotic activity. In a subset of CD4+ T-cells, colocalizes with CRTAM at the immunological synapse during the late phase of T-cell activation (By similarity) {ECO:0000250|UniProtKB:Q80U72}

#### **Tissue Location**

Expressed in kidney, skeletal muscles, liver, lung, breast, intestine, placenta and skin mainly in epithelial cells (at protein level).

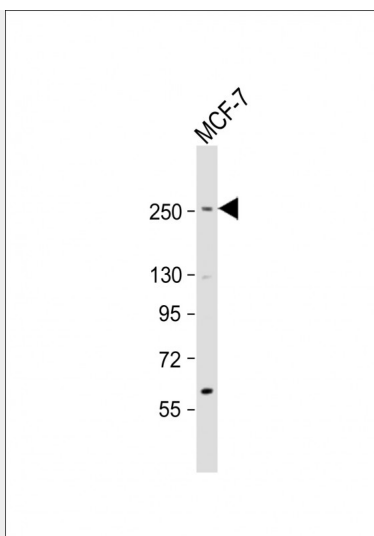
#### **SCRIB Antibody (N-term) - Protocols**

Provided below are standard protocols that you may find useful for product applications.

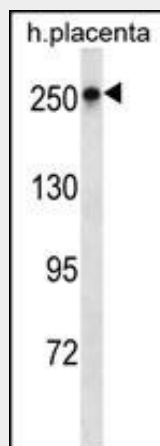
- [Western Blot](#)
- [Blocking Peptides](#)
- [Dot Blot](#)
- [Immunohistochemistry](#)
- [Immunofluorescence](#)
- [Immunoprecipitation](#)
- [Flow Cytometry](#)
- [Cell Culture](#)

#### **SCRIB Antibody (N-term) - Images**





Anti-SCRIB Antibody (N-term) at 1:2000 dilution + MCF-7 whole cell lysate Lysates/proteins at 20 µg per lane. Secondary Goat Anti-Rabbit IgG, (H+L), Peroxidase conjugated at 1/10000 dilution. Predicted band size : 175 kDa Blocking/Dilution buffer: 5% NFDM/TBST.



SCRIB Antibody (N-term)(Cat. #AP18837a) western blot analysis in human placenta tissue lysates (35ug/lane). This demonstrates the SCRIB antibody detected the SCRIB protein (arrow).

### SCRIB Antibody (N-term) - Background

SCRIB is a cytoplasmic multimodular scaffold protein targeted to epithelial adherens junctions and neuronal presynaptic compartments. SCRIB and its orthologs in vertebrates and invertebrates participate in cell polarization (summary by Nola et al., 2008 [PubMed 18716323]).

### SCRIB Antibody (N-term) - References

- Liu, H., et al. J. Virol. 84(21):11164-11174(2010)
- Nagasaka, K., et al. Oncogene 29(38):5311-5321(2010)
- Ivanov, A.I., et al. Am. J. Pathol. 176(1):134-145(2010)
- Ouyang, Z., et al. Oncol. Res. 18 (11-12), 593-599 (2010) :
- Arnaud, C., et al. FEBS Lett. 583(14):2326-2332(2009)