

**OSCAR Antibody (C-term)**  
**Affinity Purified Rabbit Polyclonal Antibody (Pab)**  
**Catalog # AP18846b**

**Specification**

---

**OSCAR Antibody (C-term) - Product Information**

Application	WB,E
Primary Accession	<a href="#">Q8IYS5</a>
Other Accession	<a href="#">NP_570127.2</a>
Reactivity	Human
Host	Rabbit
Clonality	Polyclonal
Isotype	Rabbit IgG
Calculated MW	30481
Antigen Region	205-231

**OSCAR Antibody (C-term) - Additional Information**

**Gene ID** 126014

**Other Names**

Osteoclast-associated immunoglobulin-like receptor, Osteoclast-associated receptor, hOSCAR, Polymeric immunoglobulin receptor 3, PlgR-3, PlgR3, Poly-Ig receptor 3, OSCAR

**Target/Specificity**

This OSCAR antibody is generated from rabbits immunized with a KLH conjugated synthetic peptide between 205-231 amino acids from the C-terminal region of human OSCAR.

**Dilution**

WB~~1:1000

**Format**

Purified polyclonal antibody supplied in PBS with 0.09% (W/V) sodium azide. This antibody is purified through a protein A column, followed by peptide affinity purification.

**Storage**

Maintain refrigerated at 2-8°C for up to 2 weeks. For long term storage store at -20°C in small aliquots to prevent freeze-thaw cycles.

**Precautions**

OSCAR Antibody (C-term) is for research use only and not for use in diagnostic or therapeutic procedures.

**OSCAR Antibody (C-term) - Protein Information**

**Name** OSCAR

**Function** Regulator of osteoclastogenesis which plays an important bone-specific function in

osteoclast differentiation.

#### **Cellular Location**

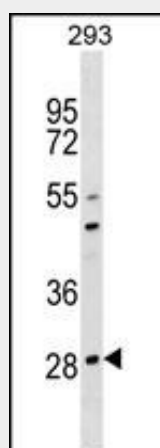
[Isoform 1]: Secreted.

#### **OSCAR Antibody (C-term) - Protocols**

Provided below are standard protocols that you may find useful for product applications.

- [Western Blot](#)
- [Blocking Peptides](#)
- [Dot Blot](#)
- [Immunohistochemistry](#)
- [Immunofluorescence](#)
- [Immunoprecipitation](#)
- [Flow Cytometry](#)
- [Cell Culture](#)

#### **OSCAR Antibody (C-term) - Images**



OSCAR Antibody (C-term)(Cat. #AP18846b) western blot analysis in 293 cell line lysates (35ug/lane). This demonstrates the OSCAR antibody detected the OSCAR protein (arrow).

#### **OSCAR Antibody (C-term) - Background**

Osteoclasts are multinucleated cells that resorb bone and are essential for bone homeostasis. This gene encodes an osteoclast-associated receptor (OSCAR), which is a member of the leukocyte receptor complex (LRC) protein family that plays critical roles in the regulation of both innate and adaptive immune responses. Different from the other LRC members, OSCAR expression is detected specifically in preosteoclasts or mature osteoclasts. OSCAR may be an important bone-specific regulator of osteoclast differentiation. Multiple alternatively spliced transcript variants encoding different isoforms have been found for this gene.

#### **OSCAR Antibody (C-term) - References**

Davila, S., et al. Genes Immun. 11(3):232-238(2010)  
Yerges, L.M., et al. J. Bone Miner. Res. 24(12):2039-2049(2009)

Herman, S., et al. Arthritis Rheum. 58(10):3041-3050(2008)  
Merck, E., et al. J. Immunol. 176(5):3149-3156(2006)  
Kim, K., et al. J. Biol. Chem. 280(42):35209-35216(2005)