

**PNMA6A Antibody (N-term)**  
**Affinity Purified Rabbit Polyclonal Antibody (Pab)**  
**Catalog # AP18859a**

**Specification**

---

**PNMA6A Antibody (N-term) - Product Information**

Application	WB,E
Primary Accession	<a href="#">P0CW24</a>
Other Accession	<a href="#">P0CZ20</a> , <a href="#">P0CW26</a> , <a href="#">P0C5W0</a>
Reactivity	Human
Host	Rabbit
Clonality	Polyclonal
Isotype	Rabbit IgG
Calculated MW	43875
Antigen Region	53-80

**PNMA6A Antibody (N-term) - Additional Information**

**Gene ID** 84968

**Other Names**

Paraneoplastic antigen-like protein 6A, PNMA6A

**Target/Specificity**

This PNMA6A antibody is generated from rabbits immunized with a KLH conjugated synthetic peptide between 53-80 amino acids from the N-terminal region of human PNMA6A.

**Dilution**

WB~~1:1000

**Format**

Purified polyclonal antibody supplied in PBS with 0.09% (W/V) sodium azide. This antibody is purified through a protein A column, followed by peptide affinity purification.

**Storage**

Maintain refrigerated at 2-8°C for up to 2 weeks. For long term storage store at -20°C in small aliquots to prevent freeze-thaw cycles.

**Precautions**

PNMA6A Antibody (N-term) is for research use only and not for use in diagnostic or therapeutic procedures.

**PNMA6A Antibody (N-term) - Protein Information**

**Name** PNMA6A ([HGNC:28248](#))

**Tissue Location**

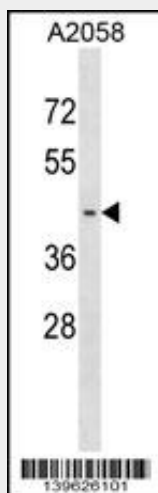
Expressed in the brain.

## PNMA6A Antibody (N-term) - Protocols

Provided below are standard protocols that you may find useful for product applications.

- [Western Blot](#)
- [Blocking Peptides](#)
- [Dot Blot](#)
- [Immunohistochemistry](#)
- [Immunofluorescence](#)
- [Immunoprecipitation](#)
- [Flow Cytometry](#)
- [Cell Culture](#)

## PNMA6A Antibody (N-term) - Images



PNMA6A Antibody (N-term)(Cat. #AP18859a) western blot analysis in A2058 cell line lysates (35ug/lane). This demonstrates the PNMA6A antibody detected the PNMA6A protein (arrow).

## PNMA6A Antibody (N-term) - Background

The function of this protein remains unknown.