

TARM1 Antibody (C-term)
Affinity Purified Rabbit Polyclonal Antibody (Pab)
Catalog # AP18883B

Specification

TARM1 Antibody (C-term) - Product Information

Application	WB,E
Primary Accession	B6A8C7
Other Accession	NP_001129158.1
Reactivity	Human
Host	Rabbit
Clonality	Polyclonal
Isotype	Rabbit IgG
Calculated MW	29455
Antigen Region	243-270

TARM1 Antibody (C-term) - Additional Information

Gene ID 441864

Other Names

T-cell-interacting, activating receptor on myeloid cells protein 1, OSCAR-like transcript-2 protein, OLT-2, TARM1

Target/Specificity

This TARM1 antibody is generated from rabbits immunized with a KLH conjugated synthetic peptide between 243-270 amino acids from the C-terminal region of human TARM1.

Dilution

WB~~1:1000

Format

Purified polyclonal antibody supplied in PBS with 0.09% (W/V) sodium azide. This antibody is purified through a protein A column, followed by peptide affinity purification.

Storage

Maintain refrigerated at 2-8°C for up to 2 weeks. For long term storage store at -20°C in small aliquots to prevent freeze-thaw cycles.

Precautions

TARM1 Antibody (C-term) is for research use only and not for use in diagnostic or therapeutic procedures.

TARM1 Antibody (C-term) - Protein Information

Name TARM1

Function May act as receptor (By similarity). Negatively regulates TCR-mediated CD4(+) T cell

proliferation and activation, possibly by binding an unknown ligand on the T cell surface (PubMed:[26311901](#)). Enhances Toll-like receptor-mediated production of pro-inflammatory cytokines by macrophages and neutrophils (By similarity).

Cellular Location

Cell membrane; Single-pass type I membrane protein

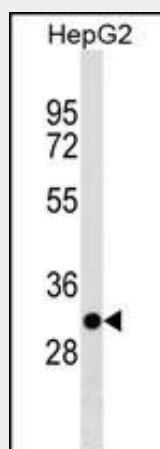
Tissue Location

Expressed in fetal and adult liver, lung, testis, thymus and spleen. Expressed in blood neutrophils

TARM1 Antibody (C-term) - Protocols

Provided below are standard protocols that you may find useful for product applications.

- [Western Blot](#)
- [Blocking Peptides](#)
- [Dot Blot](#)
- [Immunohistochemistry](#)
- [Immunofluorescence](#)
- [Immunoprecipitation](#)
- [Flow Cytometry](#)
- [Cell Culture](#)

TARM1 Antibody (C-term) - Images

TARM1 Antibody (C-term)(Cat. #AP18883b) western blot analysis in HepG2 cell line lysates (35ug/lane). This demonstrates the TARM1 antibody detected the TARM1 protein (arrow).

TARM1 Antibody (C-term) - Background

The function of this protein remains unknown.

TARM1 Antibody (C-term) - References

Kohn, L., et al. Eur. J. Hum. Genet. 17(5):651-655(2009)