

S1PR2 Antibody (C-term)
Affinity Purified Rabbit Polyclonal Antibody (Pab)
Catalog # AP18911b**Specification**

S1PR2 Antibody (C-term) - Product Information

Application	WB,E
Primary Accession	O95136
Other Accession	P47752 , P52592 , NP_004221.3
Reactivity	Human
Predicted	Mouse, Rat
Host	Rabbit
Clonality	Polyclonal
Isotype	Rabbit IgG
Calculated MW	38867
Antigen Region	272-298

S1PR2 Antibody (C-term) - Additional Information**Gene ID** 9294**Other Names**

Sphingosine 1-phosphate receptor 2, S1P receptor 2, S1P2, Endothelial differentiation G-protein coupled receptor 5, Sphingosine 1-phosphate receptor Edg-5, S1P receptor Edg-5, S1PR2, EDG5

Target/Specificity

This S1PR2 antibody is generated from rabbits immunized with a KLH conjugated synthetic peptide between 272-298 amino acids from the C-terminal region of human S1PR2.

Dilution

WB~~1:1000

Format

Purified polyclonal antibody supplied in PBS with 0.09% (W/V) sodium azide. This antibody is purified through a protein A column, followed by peptide affinity purification.

Storage

Maintain refrigerated at 2-8°C for up to 2 weeks. For long term storage store at -20°C in small aliquots to prevent freeze-thaw cycles.

Precautions

S1PR2 Antibody (C-term) is for research use only and not for use in diagnostic or therapeutic procedures.

S1PR2 Antibody (C-term) - Protein Information**Name** S1PR2

Synonyms EDG5

Function Receptor for the lysosphingolipid sphingosine 1-phosphate (S1P) (PubMed:[10617617](#)). S1P is a bioactive lysophospholipid that elicits diverse physiological effects on most types of cells and tissues (PubMed:[10617617](#)). When expressed in rat HTC4 hepatoma cells, is capable of mediating S1P-induced cell proliferation and suppression of apoptosis (PubMed:[10617617](#)). Receptor for the chemokine-like protein FAM19A5 (PubMed:[29453251](#)). Mediates the inhibitory effect of FAM19A5 on vascular smooth muscle cell proliferation and migration (By similarity).

Cellular Location

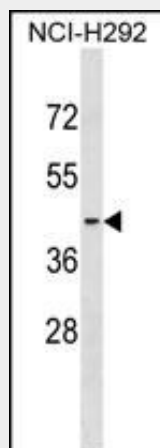
Cell membrane; Multi-pass membrane protein.

S1PR2 Antibody (C-term) - Protocols

Provided below are standard protocols that you may find useful for product applications.

- [Western Blot](#)
- [Blocking Peptides](#)
- [Dot Blot](#)
- [Immunohistochemistry](#)
- [Immunofluorescence](#)
- [Immunoprecipitation](#)
- [Flow Cytometry](#)
- [Cell Culture](#)

S1PR2 Antibody (C-term) - Images



S1PR2 Antibody (C-term)(Cat. #AP18911b) western blot analysis in NCI-H292 cell line lysates (35ug/lane). This demonstrates the S1PR2 antibody detected the S1PR2 protein (arrow).

S1PR2 Antibody (C-term) - Background

This gene encodes a member of the G protein-coupled receptors, as well as the EDG family of proteins. This protein participates in sphingosine 1-phosphate-induced cell proliferation, survival, and transcriptional activation

S1PR2 Antibody (C-term) - References

Oskeritzian, C.A., et al. J. Exp. Med. 207(3):465-474(2010)

McGeachie, M., et al. Circulation 120(24):2448-2454(2009)
Cattoretti, G., et al. Cancer Res. 69(22):8686-8692(2009)
Randriamboavonjy, V., et al. Basic Res. Cardiol. 104(3):333-340(2009)
Li, M.H., et al. Mol. Cancer Res. 6(10):1649-1656(2008)