

GJE1 Antibody (C-term)
Affinity Purified Rabbit Polyclonal Antibody (Pab)
Catalog # AP18916b

Specification

GJE1 Antibody (C-term) - Product Information

Application	WB,E
Primary Accession	A6NN92
Reactivity	Mouse
Host	Rabbit
Clonality	Polyclonal
Isotype	Rabbit IgG
Calculated MW	23755
Antigen Region	178-205

GJE1 Antibody (C-term) - Additional Information

Other Names

Gap junction epsilon-1 protein, Connexin-23, Cx23, GJE1

Target/Specificity

This GJE1 antibody is generated from rabbits immunized with a KLH conjugated synthetic peptide between 178-205 amino acids from the C-terminal region of human GJE1.

Dilution

WB~~1:1000

Format

Purified polyclonal antibody supplied in PBS with 0.09% (W/V) sodium azide. This antibody is purified through a protein A column, followed by peptide affinity purification.

Storage

Maintain refrigerated at 2-8°C for up to 2 weeks. For long term storage store at -20°C in small aliquots to prevent freeze-thaw cycles.

Precautions

GJE1 Antibody (C-term) is for research use only and not for use in diagnostic or therapeutic procedures.

GJE1 Antibody (C-term) - Protein Information

Name GJE1

Function Mediates calcium-independent ATP release, suggesting activity as a hemichannel. Does not form functional gap junctions.

Cellular Location

Cell membrane; Multi-pass membrane protein

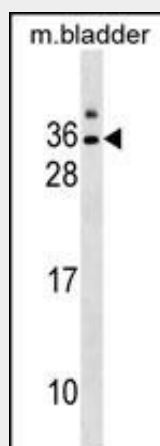
Tissue Location

Not detected in lens or retina.

GJE1 Antibody (C-term) - Protocols

Provided below are standard protocols that you may find useful for product applications.

- [Western Blot](#)
- [Blocking Peptides](#)
- [Dot Blot](#)
- [Immunohistochemistry](#)
- [Immunofluorescence](#)
- [Immunoprecipitation](#)
- [Flow Cytometry](#)
- [Cell Culture](#)

GJE1 Antibody (C-term) - Images

GJE1 Antibody (C-term) (Cat. #AP18916b) western blot analysis in mouse bladder tissue lysates (35ug/lane). This demonstrates the GJE1 antibody detected the GJE1 protein (arrow).

GJE1 Antibody (C-term) - Background

One gap junction consists of a cluster of closely packed pairs of transmembrane channels, the connexons, through which materials of low MW diffuse from one cell to a neighboring cell.

GJE1 Antibody (C-term) - Citations

- [Connexin23 deletion does not affect lens transparency.](#)