

**KCNJ18 Antibody (N-term)**  
**Affinity Purified Rabbit Polyclonal Antibody (Pab)**  
**Catalog # AP18921a****Specification**

---

**KCNJ18 Antibody (N-term) - Product Information**

Application	WB,E
Primary Accession	<a href="#">B7U540</a>
Other Accession	<a href="#">NP_001181887.1</a>
Reactivity	Human
Host	Rabbit
Clonality	Polyclonal
Isotype	Rabbit IgG
Calculated MW	48880
Antigen Region	94-122

**KCNJ18 Antibody (N-term) - Additional Information****Gene ID** 100134444**Other Names**

Inward rectifier potassium channel 18, Inward rectifier K(+) channel Kir26, Potassium channel, inwardly rectifying subfamily J member 18, KCNJ18

**Target/Specificity**

This KCNJ18 antibody is generated from rabbits immunized with a KLH conjugated synthetic peptide between 94-122 amino acids from the N-terminal region of human KCNJ18.

**Dilution**

WB~~1:1000

**Format**

Purified polyclonal antibody supplied in PBS with 0.09% (W/V) sodium azide. This antibody is purified through a protein A column, followed by peptide affinity purification.

**Storage**

Maintain refrigerated at 2-8°C for up to 2 weeks. For long term storage store at -20°C in small aliquots to prevent freeze-thaw cycles.

**Precautions**

KCNJ18 Antibody (N-term) is for research use only and not for use in diagnostic or therapeutic procedures.

**KCNJ18 Antibody (N-term) - Protein Information****Name** KCNJ18**Function** Inward rectifier potassium channels are characterized by a greater tendency to allow

potassium to flow into the cell rather than out of it. Their voltage dependence is regulated by the concentration of extracellular potassium; as external potassium is raised, the voltage range of the channel opening shifts to more positive voltages. The inward rectification is mainly due to the blockage of outward current by internal magnesium.

#### Cellular Location

Cell membrane; Multi-pass membrane protein

#### Tissue Location

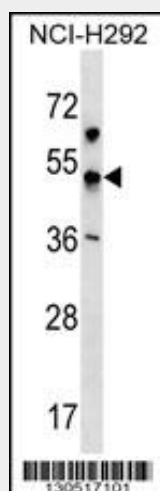
Specifically expressed in skeletal muscle.

### KCNJ18 Antibody (N-term) - Protocols

Provided below are standard protocols that you may find useful for product applications.

- [Western Blot](#)
- [Blocking Peptides](#)
- [Dot Blot](#)
- [Immunohistochemistry](#)
- [Immunofluorescence](#)
- [Immunoprecipitation](#)
- [Flow Cytometry](#)
- [Cell Culture](#)

### KCNJ18 Antibody (N-term) - Images



KCNJ18 Antibody (N-term) (Cat. #AP18921a) western blot analysis in NCI-H292 cell line lysates (35ug/lane). This demonstrates the KCNJ18 antibody detected the KCNJ18 protein (arrow).

### KCNJ18 Antibody (N-term) - Background

Inwardly rectifying potassium channels, such as KCNJ18, maintain resting membrane potential in excitable cells and aid in repolarization of cells following depolarization. KCNJ18 is primarily expressed in skeletal muscle and is transcriptionally regulated by thyroid hormone (Ryan et al., 2010 [PubMed 20074522]).

### KCNJ18 Antibody (N-term) - References

Ryan, D.P., et al. Cell 140(1):88-98(2010)