

RAB4B Antibody (N-term)
Affinity Purified Rabbit Polyclonal Antibody (Pab)
Catalog # AP18987a**Specification**

RAB4B Antibody (N-term) - Product Information

Application	WB,E
Primary Accession	P61018
Other Accession	P51146 , Q91ZR1 , Q68EK7 , NP_057238.3
Reactivity	Human
Predicted	Zebrafish, Mouse, Rat
Host	Rabbit
Clonality	Polyclonal
Isotype	Rabbit IgG
Calculated MW	23587
Antigen Region	29-58

RAB4B Antibody (N-term) - Additional Information**Gene ID** 53916**Other Names**

Ras-related protein Rab-4B, RAB4B

Target/Specificity

This RAB4B antibody is generated from rabbits immunized with a KLH conjugated synthetic peptide between 29-58 amino acids from the N-terminal region of human RAB4B.

Dilution

WB~~1:1000

Format

Purified polyclonal antibody supplied in PBS with 0.09% (W/V) sodium azide. This antibody is purified through a protein A column, followed by peptide affinity purification.

Storage

Maintain refrigerated at 2-8°C for up to 2 weeks. For long term storage store at -20°C in small aliquots to prevent freeze-thaw cycles.

Precautions

RAB4B Antibody (N-term) is for research use only and not for use in diagnostic or therapeutic procedures.

RAB4B Antibody (N-term) - Protein Information**Name** RAB4B**Function** Small GTPase which cycles between an active GTP-bound and an inactive GDP-bound

state (By similarity). Protein transport. Probably involved in vesicular traffic (By similarity). Acts as a regulator of platelet alpha-granule release during activation and aggregation of platelets (By similarity).

Cellular Location

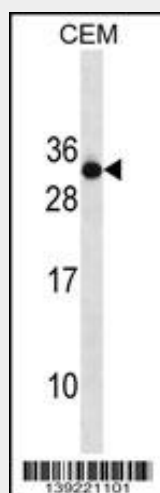
Cell membrane; Lipid-anchor; Cytoplasmic side

RAB4B Antibody (N-term) - Protocols

Provided below are standard protocols that you may find useful for product applications.

- [Western Blot](#)
- [Blocking Peptides](#)
- [Dot Blot](#)
- [Immunohistochemistry](#)
- [Immunofluorescence](#)
- [Immunoprecipitation](#)
- [Flow Cytometry](#)
- [Cell Culture](#)

RAB4B Antibody (N-term) - Images



RAB4B Antibody (N-term) (Cat. #AP18987a) western blot analysis in CEM cell line lysates (35ug/lane). This demonstrates the RAB4B antibody detected the RAB4B protein (arrow).

RAB4B Antibody (N-term) - Background

RAB proteins, such as RAB4B, are members of the RAS superfamily of small GTPases that are involved in vesicular trafficking (He et al., 2002 [PubMed 12450215]).

RAB4B Antibody (N-term) - References

Kaddai, V., et al. PLoS ONE 4 (4), E5257 (2009) :
Lamesch, P., et al. Genomics 89(3):307-315(2007)
Wan, D., et al. Proc. Natl. Acad. Sci. U.S.A. 101(44):15724-15729(2004)
He, H., et al. Gene Expr. 10 (5-6), 231-242 (2002) :