

RXFP2 Antibody (C-term)
Affinity Purified Rabbit Polyclonal Antibody (Pab)
Catalog # AP18991b

Specification

RXFP2 Antibody (C-term) - Product Information

Application	WB,E
Primary Accession	Q8WXD0
Other Accession	NP_570718.1
Reactivity	Human
Host	Rabbit
Clonality	Polyclonal
Isotype	Rabbit IgG
Calculated MW	86453
Antigen Region	692-721

RXFP2 Antibody (C-term) - Additional Information

Gene ID 122042

Other Names

Relaxin receptor 2, G-protein coupled receptor 106, G-protein coupled receptor affecting testicular descent, Leucine-rich repeat-containing G-protein coupled receptor 8, Relaxin family peptide receptor 2, RXFP2, GPR106, GREAT, LGR8

Target/Specificity

This RXFP2 antibody is generated from rabbits immunized with a KLH conjugated synthetic peptide between 692-721 amino acids from the C-terminal region of human RXFP2.

Dilution

WB~~1:1000

Format

Purified polyclonal antibody supplied in PBS with 0.09% (W/V) sodium azide. This antibody is purified through a protein A column, followed by peptide affinity purification.

Storage

Maintain refrigerated at 2-8°C for up to 2 weeks. For long term storage store at -20°C in small aliquots to prevent freeze-thaw cycles.

Precautions

RXFP2 Antibody (C-term) is for research use only and not for use in diagnostic or therapeutic procedures.

RXFP2 Antibody (C-term) - Protein Information

Name RXFP2

Synonyms GPR106, GREAT, LGR8

Function Receptor for relaxin. The activity of this receptor is mediated by G proteins leading to stimulation of adenylate cyclase and an increase of cAMP. May also be a receptor for Leydig insulin-like peptide (INSL3).

Cellular Location

Cell membrane; Multi-pass membrane protein.

Tissue Location

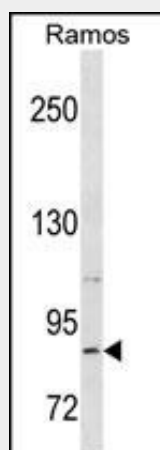
Expressed mainly in the brain, kidney, muscle, testis, thyroid, uterus, peripheral blood cells and bone marrow

RXFP2 Antibody (C-term) - Protocols

Provided below are standard protocols that you may find useful for product applications.

- [Western Blot](#)
- [Blocking Peptides](#)
- [Dot Blot](#)
- [Immunohistochemistry](#)
- [Immunofluorescence](#)
- [Immunoprecipitation](#)
- [Flow Cytometry](#)
- [Cell Culture](#)

RXFP2 Antibody (C-term) - Images



RXFP2 Antibody (C-term) (Cat. #AP18991b) western blot analysis in Ramos cell line lysates (35ug/lane). This demonstrates the RXFP2 antibody detected the RXFP2 protein (arrow).

RXFP2 Antibody (C-term) - Background

This gene encodes a member of the GPCR (G protein-coupled, 7-transmembrane receptor) family. Mutations in this gene are associated with cryptorchidism. Alternatively spliced transcript variants encoding different isoforms have been found for this gene.

RXFP2 Antibody (C-term) - References

Ars, E., et al. Int. J. Androl. (2010) In press :
Ferlin, A., et al. Ann. N. Y. Acad. Sci. 1160, 215-218 (2009) :
Ferlin, A., et al. Ann. N. Y. Acad. Sci. 1160, 213-214 (2009) :
Feng, S., et al. Ann. N. Y. Acad. Sci. 1160, 197-204 (2009) :
Scott, D.J., et al. Ann. N. Y. Acad. Sci. 1160, 74-77 (2009) :